

(19) World Intellectual Property  
Organization  
International Bureau



(43) International Publication Date  
8 January 2004 (08.01.2004)

PCT

(10) International Publication Number  
WO 2004/003155 A2

- (51) International Patent Classification<sup>7</sup>: C12N
- (74) Agent: SIEGEL, Susan, Alpert; Klarquist, Sparkman, LLP, One World Trade Center, Suite 1600, 121 SW Salmon Street, Portland, OR 97204 (US).
- (21) International Application Number: PCT/US2003/020367
- (81) Designated States (*national*): AE, AG, AL, AM, AT, AU, AZ, BA, BB, BG, BR, BY, BZ, CA, CH, CN, CO, CR, CU, CZ, DE, DK, DM, DZ, EC, EE, ES, FI, GB, GD, GE, GH, GM, HR, HU, ID, IL, IN, IS, JP, KE, KG, KP, KR, KZ, LC, LK, LR, LS, LT, LU, LV, MA, MD, MG, MK, MN, MW, MX, MZ, NI, NO, NZ, OM, PG, PH, PL, PT, RO, RU, SC, SD, SE, SG, SK, SL, SY, TJ, TM, TN, TR, TT, TZ, UA, UG, US, UZ, VC, VN, YU, ZA, ZM, ZW.
- (22) International Filing Date: 26 June 2003 (26.06.2003)
- (25) Filing Language: English
- (26) Publication Language: English
- (30) Priority Data: 60/393,077 28 June 2002 (28.06.2002) US
- (84) Designated States (*regional*): ARIPO patent (GH, GM, KE, LS, MW, MZ, SD, SL, SZ, TZ, UG, ZM, ZW), Eurasian patent (AM, AZ, BY, KG, KZ, MD, RU, TJ, TM), European patent (AT, BE, BG, CH, CY, CZ, DE, DK, EE, ES, FI, FR, GB, GR, HU, IE, IT, LU, MC, NL, PT, RO, SE, SI, SK, TR), OAPI patent (BF, BJ, CF, CG, CI, CM, GA, GN, GQ, GW, ML, MR, NE, SN, TD, TG).
- (71) Applicant (*for all designated States except US*): THE GOVERNMENT OF THE UNITED STATES OF AMERICA, as represented by THE SECRETARY OF THE DEPARTMENT OF HEALTH AND HUMAN SERVICES [US/US]; c/o National Institutes of Health, Office of Technology Transfer, Suite 325, 6011 Executive Boulevard, Rockville, MD 20852-3804 (US).
- Declaration under Rule 4.17:  
— *of inventorship (Rule 4.17(iv)) for US only*
- (72) Inventors; and
- (75) Inventors/Applicants (*for US only*): KASHMIRI, Syed, V., S. [US/US]; 11541 Brandy Hall Lane, Gaithersburg, MD 20878 (US). SCHLOM, Jeffrey [US/US]; 10301 Sorrel Avenue, Potomac, MD 20854 (US). PADLAN, Eduardo, A. [US/US]; 4006 Simms Drive, Kensington, MD 20895 (US).
- Published:  
— *without international search report and to be republished upon receipt of that report*
- For two-letter codes and other abbreviations, refer to the "Guidance Notes on Codes and Abbreviations" appearing at the beginning of each regular issue of the PCT Gazette.*



WO 2004/003155 A2

(54) Title: HUMANIZED ANTI-TAG-72 CC49 FOR DIAGNOSIS AND THERAPY OF HUMAN TUMORS

(57) Abstract: The present disclosure provides humanized CC49 monoclonal antibodies that bind TAG-72 with high binding affinity and that are minimally immunogenic. In one embodiment, a humanized CC49 antibody includes a non-conservative amino acid substitution in a light chain complementarity determining region 3 of the CC49 antibody. In a further embodiment, the humanized CC49 antibody includes a non-conservative substitution of a first residue in a light chain complementarity determining region 3 and a substitution of a second residue in a complementarity determining region of the humanized CC49 antibody. In several of the embodiments, methods are disclosed for the use of a humanized CC49 antibody in the detection or treatment of a tumor in a subject. Also disclosed is a kit including the humanized CC49 antibody described herein.

-1-

***HUMANIZED ANTI-TAG-72 CC49 FOR DIAGNOSIS AND THERAPY  
OF HUMAN TUMORS***

**PRIORITY CLAIM**

5           This application claims the benefit of U.S. Provisional Application No. 60/393,077, filed June 28, 2003, which is incorporated herein by reference.

**FIELD**

10           The present disclosure relates to humanized monoclonal antibodies that bind a tumor antigen. More specifically, the present disclosure relates to humanized monoclonal antibodies with non-conservative amino acid substitutions that have a high binding affinity for tumor-associated glycoprotein (TAG)-72 and minimal immunogenicity.

**BACKGROUND**

15           The use of murine monoclonal antibodies in medicine has significant potential especially in the diagnosis and treatment of various diseases, including cancer. The advantage of using monoclonal antibodies resides in their specificity for a single antigen. A monoclonal antibody raised against a specific tumor cell surface antigen can be coupled to therapeutic agents, such as radioisotopes and chemotherapeutic drugs, and these immunoconjugates can be used clinically to specifically target, for example, a tumor cell of interest.

20           A major limitation in the clinical use of monoclonal antibodies is the development of a human anti-murine antibody (HAMA) response in the patients receiving the treatments. The HAMA response can involve allergic reactions and an increased rate of clearance of the administered antibody from the serum. Various types of modified monoclonal antibodies have been developed to minimize the HAMA response while trying to maintain the antigen binding affinity of the parent monoclonal antibody. One type of modified monoclonal antibody is a human-mouse chimera in

-2-

which a murine antigen-binding variable region is coupled to a human constant domain (Morrison and Schlom, *Important Advances in Oncology*, Rosenberg, S.A. (Ed.), 1989). A second type of modified monoclonal antibody is the complementarity determining region (CDR)-grafted, or humanized, monoclonal antibody (Winter and Harris, 5 *Immunol. Today* 14:243-246, 1993).

The tumor-associated glycoprotein (TAG)-72, is expressed on the cells of a majority of human carcinomas, including adenocarcinoma, colorectal, gastric, pancreatic, breast, lung and ovarian carcinomas. Murine monoclonal antibodies have been disclosed that specifically bind TAG-72. One of these antibodies, CC49, has been 10 shown to efficiently target and reduce the size of human colon carcinoma xenografts in nude mice, and has been targeted to a variety of carcinomas in a number of clinical trials. Unfortunately, the clinical utility of the CC49 monoclonal antibody has been limited because of its murine origin. Thus, there clearly exists a need to develop a humanized CC49 antibody with both high antigen binding affinity and low 15 immunogenicity for use in human subjects.

#### SUMMARY

The present disclosure relates to humanized CC49 monoclonal antibodies that 20 bind TAG-72 with high binding affinity and that are minimally immunogenic.

In one embodiment of the disclosure, a humanized CC49 antibody includes a non-conservative amino acid substitution in a light chain complementarity determining region 3 of the CC49 antibody, or functional fragment thereof, and has a high binding affinity for TAG-72.

25 In another embodiment, a humanized CC49 antibody includes a nucleic acid sequence encoding the antibody that is deposited as ATCC Accession number PTA-4182 or ATCC Accession number PTA-4183.

In one embodiment, a humanized CC49 antibody with high binding affinity for TAG-72 and minimal immunogenicity includes a variable light framework region and a

-3-

variable heavy framework region of a human antibody. The humanized CC49 antibody has at least one complementarity determining region from a human antibody and the remaining complementarity determining regions from a murine CC49 antibody. The humanized CC49 antibody also includes a non-conservative substitution of a first  
5 residue in a light chain complementarity determining region 3 and a substitution of a second residue in a complementarity determining region of the human CC49 antibody.

Methods are disclosed herein for the use of a humanized CC49 antibody in the detection or treatment of a tumor in a subject. In one specific embodiment, a method is disclosed for detecting a tumor. The method includes contacting a sample obtained  
10 from the subject with a humanized CC49 antibody for a sufficient amount of time to form an immune complex, and then detecting the presence of the immune complex. Another method is disclosed for detecting a tumor in a subject that includes administering a humanized CC49 antibody to the subject for a sufficient amount of time to form an immune complex and then detecting the presence of the immune complex.  
15 In a further embodiment, a method is disclosed for treating a subject having a tumor that expresses TAG-72. The method includes administering to the subject a therapeutically effective amount of a humanized CC49 antibody, for example, such as an antibody conjugated to a drug or toxin.

A kit is disclosed herein that includes a container with the humanized CC49  
20 antibody described herein.

The foregoing and other features and advantages will become more apparent from the following detailed description of several embodiments, which proceeds with reference to the accompanying figures.

## 25 BRIEF DESCRIPTION OF THE FIGURES

Figure 1 is a schematic drawing comparing amino acid substitutions in CC49, HuCC49V10, HuCC49V10-14 and HuCC49V10-15. Amino acid residue number is shown at the top of the figure. CDR region is indicated at the bottom of the figure.

-4-

Figure 2 is a schematic representation of the phage display vector, PComb3H-SS. Only those restriction endonuclease sites are shown that are relevant to cloning of the target genes or converting the expression construct for soluble Fab expression. Gene III indicates a sequence encoding the carboxyl-terminal domain of the gene III protein of phage M13. *Lac Z p* represents the *lac Z* promoter of *E. coli*. *Omp A* and *pel B* are the prokaryotic leader sequences; RBS shows ribosomal binding site for protein translation. SS I and SS II are the stuffer sequences, and stop denotes the termination codon for protein synthesis.

Figure 3 is a schematic representation of the vectors pIZ/V5-His (Figure 3A) and ppIB/V5-His (Figure 3B) for the expression of proteins in insect cells.

Figure 4 is a set of digital images demonstrating SDS-PAGE analysis of purified HuCC49 and the variant antibodies derived from it under non-reducing (Figure 4A) and reducing (Figure 4B) conditions. Lane 1, HuCC49; lane 2, HuCC49V10; lane 3, HuCC49V10-7; lane 4, HuCC49V10-12, lane 5, HuCC49V10-14, lane 6, HuCC49V10-15 (lane designations are the same for Figure 4A and 4B).

Figure 5 is a graph demonstrating the reactivity of CC49 antibodies (identified by their symbols in the inset) in a competition RIA. Increasing concentrations of different antibodies were used to compete for the binding of <sup>125</sup>I-labeled HuCC49 to the TAG-72 positive BSM.

Figure 6 is a series of tables of flow cytometric analysis of the binding of CC49 derived recombinant antibodies to Jurkat cells that express TAG-72 antigen on their cell surface. The percent of gated cells for different antibodies are tabulated.

Figure 7 is a set of graphs demonstrating the reactivity of HuCC49 and its variants to sera from patient EA (Figure 7A) and DS (Figure 7B), measured by surface plasma resonance (SPR). Increasing concentrations of the antibodies tested were used to compete with the sera anti-idiotypic (anti variable region) antibodies for binding to HuCC49 immobilized on sensor chip. Percent binding of the sera to HuCC49 was calculated from the sensogram and plotted as a function of the concentration of the competitor.

**DETAILED DESCRIPTION***I. Abbreviations*

|    |                    |  |
|----|--------------------|--|
| 5  |                    |  |
|    | BSM                | bovine submaxillary mucin  |
|    | C                  | constant   |
|    | CH                 | constant heavy   |
|    | CL                 | constant light   |
| 10 | CDR                | complementarity determining region   |
|    | Fab                | fragment antigen binding   |
|    | F(ab) <sub>2</sub> | Fab with additional amino acids, including cysteines necessary for disulfide bonds |
|    | FACS               | fluorescence activated cell sort   |
| 15 | FR                 | framework region   |
|    | Fv                 | fragment variable  |
|    | H                  | heavy  |
|    | HAMA               | human antimurine antibody  |
|    | HuIgG              | human immunoglobulin G   |
| 20 | Ig                 | immunoglobulin   |
|    | Ka                 | relative affinity constant   |
|    | L                  | light  |
|    | PCR                | polymerase chain reaction  |
|    | scFv               | single chain Fv  |
| 25 | SDR                | specificity determining residue  |
|    | SPR                | surface plasmon resonance  |
|    | TAG-72             | tumor associated glycoprotein-72   |
|    | V                  | variable   |
|    | VH                 | variable heavy   |

VL variable light

## II. Terms

Unless otherwise noted, technical terms are used according to conventional  
5 usage. Definitions of common terms in molecular biology may be found in Benjamin  
Lewin, *Genes V*, published by Oxford University Press, 1994 (ISBN 0-19-854287-9);  
Kendrew *et al.* (eds.), *The Encyclopedia of Molecular Biology*, published by Blackwell  
Science Ltd., 1994 (ISBN 0-632-02182-9); and Robert A. Meyers (ed.), *Molecular  
10 Biology and Biotechnology: A Comprehensive Desk Reference*, published by VCH  
Publishers, Inc., 1995 (ISBN 1-56081-569-8).

In order to facilitate review of the various embodiments of the invention, the  
following explanations of specific terms are provided:

**Animal:** Living multi-cellular vertebrate organisms, a category that includes,  
15 for example, mammals and birds. The term mammal includes both human and non-  
human mammals. Similarly, the term "subject" includes both human and veterinary  
subjects.

**Antibody:** Immunoglobulin (Ig) molecules and immunologically active portions  
of Ig molecules, i.e., molecules that contain an antigen binding site which specifically  
20 binds (immunoreacts with) an antigen. In one embodiment the antigen is tumor-  
associated glycoprotein (TAG-72). Monoclonal, and humanized immunoglobulins are  
encompassed by the disclosure. In one embodiment, a murine monoclonal antibody that  
recognizes the TAG-72 antigen is CC49. In another embodiment, a humanized CC49  
antibody is HuCC49. In other embodiments, variant humanized CC49 antibodies are  
25 HuCC49V10-14 or HuCC49V10-15. The disclosure also includes synthetic and  
genetically engineered variants of these immunoglobulins.

A naturally occurring antibody (e.g., IgG) includes four polypeptide chains, two  
heavy (H) chains and two light (L) chains inter-connected by disulfide bonds.  
However, it has been shown that the antigen-binding function of an antibody can be

-7-

performed by fragments of a naturally occurring antibody. Thus, these antigen-binding fragments are also intended to be designated by the term "antibody." Examples of binding fragments encompassed within the term antibody include (i) an Fab fragment consisting of the VL, VH, CL and CH1 domains; (ii) an Fd fragment consisting of the VH and CH1 domains; (iii) an Fv fragment consisting of the VL and VH domains of a single arm of an antibody, (iv) a dAb fragment (Ward *et al.*, (1989) *Nature* 341:544-546) which consists of a VH domain; and (v) an F(ab')<sub>2</sub> fragment, a bivalent fragment comprising two Fab fragments linked by a disulfide bridge at the hinge region. Furthermore, although the two domains of the Fv fragment are coded for by separate genes, a synthetic linker can be made that enables them to be made as a single protein chain (known as single chain Fv (scFv); Bird *et al.* (1988) *Science* 242:423-426; and Huston *et al.* (1988) *Proc. Natl. Acad. Sci.* 85:5879-5883) by recombinant methods. Such single chain antibodies, as well as dsFv, a disulfide stabilized Fv (Bera *et al.* (1998) *J. Mol. Biol.* 281:475-483), and dimeric Fvs (diabodies), that are generated by pairing different polypeptide chains (Holliger *et al.* (1993) *Proc. Natl. Acad. Sci.* 90:6444-6448), are also included.

In one embodiment, antibody fragments for use in this disclosure are those which are capable of cross-linking their target antigen, e.g., bivalent fragments such as F(ab')<sub>2</sub> fragments. Alternatively, an antibody fragment which does not itself cross-link its target antigen (e.g., a Fab fragment) can be used in conjunction with a secondary antibody which serves to cross-link the antibody fragment, thereby cross-linking the target antigen. Antibodies can be fragmented using conventional techniques and the fragments screened for utility in the same manner as described for whole antibodies. An antibody is further intended to include humanized monoclonal molecules that specifically bind the target antigen.

"Specifically binds" refers to the ability of individual antibodies to specifically immunoreact with an antigen. This binding is a non-random binding reaction between an antibody molecule and the antigen. In one embodiment, the antigen is TAG-72. Binding specificity is typically determined from the reference point of the ability of the



-8-

antibody to differentially bind the antigen of interest and an unrelated antigen, and therefore distinguish between two different antigens, particularly where the two antigens have unique epitopes. An antibody that specifically binds to a particular epitope is referred to as a "specific antibody."

5           A variety of methods for linking effector molecules to antibodies are well known in the art. Detectable labels useful for such purposes are also well known in the art, and include radioactive isotopes such as  $^{32}\text{P}$ , fluorophores, chemiluminescent agents, and enzymes. Also encompassed in the disclosure are the chemical or biochemical modifications that incorporate toxins in the antibody. In one embodiment, 10 the toxin is chemically conjugated to the antibody. In another embodiment, a fusion protein is genetically engineered to include the antibody and the toxin. Specific, non-limiting examples of toxins are radioactive isotopes, chemotherapeutic agents, bacterial toxins, viral toxins, or venom proteins. The disclosure also includes chemical or genetically engineered modifications that link a cytokine to an antibody (such as by a 15 covalent linkage). Specific, non-limiting examples of cytokines are interleukin (IL)-2, IL-4, IL-10, tumor necrosis factor (TNF)-alpha and interferon (IFN)-gamma.

**Antigen:** Any molecule that can bind specifically with an antibody. An antigen is also a substance that antagonizes or stimulates the immune system to produce antibodies. Antigens are often foreign substances such as allergens, bacteria or viruses 20 that invade the body.

**CC49 monoclonal antibody:** A murine monoclonal antibody of the IgG<sub>1</sub> isotype that specifically binds TAG-72 (deposited as ATCC Accession No. HB 9459). This monoclonal antibody is a second generation monoclonal antibody prepared by immunizing mice with TAG-72 that was purified using the first generation antibody 25 B72.3 (Colcher *et al.*, *Proc. Natl. Acad. Sci. USA* 78:3199-3203, 1981). The CC49 monoclonal antibody efficiently targets human colon carcinoma xenografts in athymic mice and reduces or eliminates their growth (Colcher *et al.*, *Cancer Res.* 48:4597-4603, 1988). Radiolabeled CC49 has been shown to successfully target a number of human tumors including adenocarcinoma, colorectal, breast, prostate and ovarian (Liu *et al.*,

*Cancer Biotherap Radiopharm.* 12:79-87, 1997; Macey *et al.*, *Clin. Cancer Res.* 3:1547-1555, 1997; Meredith *et al. J. Nucl. Med.*, 37:1491-1496, 1996.)

**cDNA (complementary DNA):** A piece of DNA lacking internal, non-coding segments (introns) and regulatory sequences that determine transcription. cDNA is synthesized in the laboratory by reverse transcription from messenger RNA extracted from cells.

**Chimeric antibody:** An antibody which includes sequences derived from two different antibodies, which typically are of different species. Most typically, chimeric antibodies include human and murine antibody domains, generally human constant and murine variable regions.

**Complementarity Determining Region (CDR):** Amino acid sequences which together define the binding affinity and specificity of the natural Fv region of a native Ig binding site. The light and heavy chains of an Ig each have three CDRs, designated L-CDR1, L-CDR2, L-CDR3 and H-CDR1, H-CDR2, H-CDR3, respectively. By definition, the CDRs of the light chain are bounded by the residues at positions 24 and 34 (L-CDR1), 50 and 56 (L-CDR2), 89 and 97 (L-CDR3); the CDRs of the heavy chain are bounded by the residues at positions 31 and 35b (H-CDR1), 50 and 65 (H-CDR2), 95 and 102 (H-CDR3), using the numbering convention delineated by Kabat *et al.*, (1991) *Sequences of Proteins of Immunological Interest*, 5<sup>th</sup> Edition, Department of Health and Human Services, Public Health Service, National Institutes of Health, Bethesda (NIH Publication No. 91-3242).

**Constant Region:** The portion of the antibody molecule which confers effector functions. In the present disclosure, the variant antibodies include constant regions derived from human immunoglobulins. The heavy chain constant region can be selected from any of five isotypes: alpha, delta, epsilon, gamma or mu. Heavy chains of various subclasses (such as the IgG subclass of heavy chains) are responsible for different effector functions. Thus, by choosing the desired heavy chain constant region, humanized antibodies with the desired effector function can be produced. The light chain constant region can be of the kappa or lambda type.

-10-

**Cytotoxin:** An agent that is toxic for cells. Examples of cytotoxins include radioactive isotopes, chemotherapeutic drugs, bacterial toxins, viral toxins, and proteins contained in venom (e.g. insect, reptile, or amphibian venom). A cytokine, such as interleukin-2 or interferon, can also be a cytotoxin.

- 5           **DNA:** Deoxyribonucleic acid. DNA is a long chain polymer which constitutes the genetic material of most living organisms (some viruses have genes composed of ribonucleic acid (RNA)). The repeating units in DNA polymers are four different nucleotides, each of which contains one of the four bases, adenine, guanine, cytosine and thymine bound to a deoxyribose sugar to which a phosphate group is attached.
- 10       Triplets of nucleotides (referred to as codons) code for each amino acid in a polypeptide. The term codon is also used for the corresponding (and complementary) sequence of three nucleotides in the mRNA that is transcribed from the DNA.

- Effector Molecule:** Therapeutic, diagnostic or detection moieties linked to an antibody, using any number of means known to those of skill in the art. Both covalent and noncovalent linkage means may be used. The procedure for linking an effector molecule to an antibody varies according to the chemical structure of the effector.
- 15       Polypeptides typically contain a variety of functional groups; e.g., carboxylic acid (COOH), free amine (-NH<sub>2</sub>) or sulfhydryl (-SH) groups, which are available for reaction with a suitable functional group on an antibody to result in the linkage of the effector molecule. Alternatively, the antibody is derivatized to expose or link additional reactive functional groups. The derivatization may involve linkage of any of a number of linker molecules such as those available from Pierce Chemical Company, Rockford Illinois.
- 20       The linker can be any molecule used to join the antibody to the effector molecule. The linker is capable of forming covalent bonds to both the antibody and to the effector molecule. Suitable linkers are well known to those of skill in the art and include, but are not limited to, straight or branched-chain carbon linkers, heterocyclic carbon linkers, or peptide linkers. Where the antibody and the effector molecule are polypeptides, the linkers may be joined to the constituent amino acids through their side groups (e.g.,
- 25

-11-

through a disulfide linkage to cysteine) or to the alpha carbon amino and carboxyl groups of the terminal amino acids.

In some circumstances, it is desirable to free the effector molecule from the antibody when the immunoconjugate has reached its target site. Therefore, in these  
5 circumstances, immunoconjugates will comprise linkages that are cleavable in the vicinity of the target site. Cleavage of the linker to release the effector molecule from the antibody may be prompted by enzymatic activity or conditions to which the immunoconjugate is subjected either inside the target cell or in the vicinity of the target site. When the target site is a tumor, a linker which is cleavable under conditions  
10 present at the tumor site (*e.g.* when exposed to tumor-associated enzymes or acidic pH) may be used.

In view of the large number of methods that have been reported for linking a variety of radiodiagnostic compounds, radiotherapeutic compounds, label (*e.g.* enzymes or fluorescent molecules) drugs, toxins, and other agents to antibodies one skilled in the  
15 art will be able to determine a suitable method for linking a given agent to an antibody.

**Encode:** A polynucleotide is said to "encode" a polypeptide if, in its native state or when manipulated by methods well known to those skilled in the art, it can be transcribed and/or translated to produce the mRNA for and/or the polypeptide or a fragment thereof. The anti-sense strand is the complement of such a nucleic acid, and  
20 the encoding sequence can be deduced therefrom.

**Epitope:** A site on an antigen recognized by an antibody, as determined by the specificity of the antibody amino acid sequence. Epitopes are also called antigenic determinants.

**Framework Region:** Amino acid sequences interposed between CDRs.  
25 Includes variable light and variable heavy framework regions. The framework regions serve to hold the CDRs in an appropriate orientation for antigen binding.

**High binding affinity:** Affinity of an antibody for an antigen where the relative affinity of the humanized CC49 antibody is significantly greater than that of a parent CC49 antibody, for example HuCC49V10. In one embodiment, affinity is calculated by

-12-

a modification of the Scatchard method described by Frankel *et al.* (1979) *Mol. Immunol.*, 16:101-106. One of skill in the art can readily identify a statistical test that determines a statistically significant result for example, the Student's t-test, the Wilcoxon two sample test, or the Median test. In one embodiment, a high binding  
5 affinity is at least about  $1.2 \times 10^{-8}$  M. In other embodiments, a high binding affinity is at least about  $1.5 \times 10^{-8}$ , at least about  $2.0 \times 10^{-8}$ , at least about  $2.5 \times 10^{-8}$ , at least about  $3.0 \times 10^{-8}$ , at least about  $3.5 \times 10^{-8}$ , at least about  $4.0 \times 10^{-8}$ , at least about  $4.5 \times 10^{-8}$ , or at least about  $5.0 \times 10^{-8}$  M.

In another embodiment, a high binding affinity is measured by an  
10 antigen/antibody dissociation rate of a humanized CC49 antibody that is significantly lower than the parent CC49 antibody. In yet another embodiment, a high binding affinity is measured by a competition radioimmunoassay, where the amount of antibody needed for 50% inhibition of the binding of  $^{125}$ I-labeled HuCC49 antibody to BSM is less than that required by the parent CC49 antibody. In another embodiment, a high  
15 binding affinity is measured by flow cytometry as an increased number of gated cells labeled with humanized CC49 antibody compared to the number of cells labeled by the parent CC49 antibody.

**HAMA (Human anti-murine antibody) response:** An immune response in a human subject to the variable and constant regions of a murine antibody that has been  
20 administered to the patient. Repeated antibody administration may lead to an increased rate of clearance of the antibody from the patient's serum and may also elicit allergic reactions in the patient.

**Humanized antibody:** A human antibody genetically engineered to include mouse hypervariable regions. In one embodiment, the DNA encoding hypervariable  
25 loops of mouse monoclonal antibodies or variable regions selected in phage display libraries is inserted into the framework regions of human Ig genes. Antibodies can be "customized" to have a desired binding affinity or to be minimally immunogenic in the humans treated with them.

-13-

**Humanized CC49 antibodies:** CC49 antibodies humanized by grafting CC49 CDRs onto the frameworks of the relevant human antibodies (Kashmiri *et al.*, *Hybridoma*, 14: 461-473, 1995). The murine CDRs in the resultant humanized CC49 (HuCC49) could evoke an anti-idiotypic response when administered in human

5 subjects. CC49 can be humanized by grafting only CC49 CDRs that are important for antigen binding onto the variable light and variable heavy framework regions of, for example, LEN and 21/28'CL human antibodies (Tamura *et al.*, *J. Immunol.* 164:1432-1441, 2000; WO 00/26394). In addition, non-specificity determining residues (SDRs) in the murine CDRs can be substituted with the corresponding residue in the human

10 antibody. One specific, non-limiting example of a humanized CC49 monoclonal antibody is HuCC49V10 (see published PCT patent application PCT/US99/25552, herein incorporated by reference). In one embodiment, HuCC49V10 has minimal immunogenicity (compared to the parental HuCC49 antibody, at least 16-fold higher molar concentration of HuCC49V10 was required to attain 25% inhibition of HuCC49

15 binding to patient serum) and a partial loss in antigen-binding affinity ( $1.15 \times 10^{-8}$  M) compared to the parent HuCC49 antibody ( $3.20 \times 10^{-8}$  M). In one embodiment, a humanized CC49 antibody is HuCC49V10-14 (ATCC Accession Number PTA-4182, see Fig. 1; also termed HuCC49V14 in the deposit). In another embodiment, a humanized CC49 antibody is HuCC49V10-15 (ATCC Accession Number PTA-4183,

20 see Fig. 1; also termed HuCC49V15 in the deposit).

**Idiotypic:** the property of a group of antibodies or T cell receptors defined by their sharing a particular idiotope (an antigenic determinant on the variable region); *i.e.*, antibodies that share a particular idiotope belong to the same idiotype. "Idiotype" may be used to describe the collection of idiotopes expressed by an Ig molecule. An "anti-

25 idiotype" antibody may be prepared to a monoclonal antibody by methods known to those of skill in the art and may be used to prepare pharmaceutical compositions.

**Immune cell:** Any cell involved in a host defense mechanism. These can include, for example, T cells, B cells, natural killer cells, neutrophils, mast cells, macrophages, antigen-presenting cells, basophils, eosinophils, and neutrophils.

-14-

**Immune response:** A response of a cell of the immune system, such as a neutrophil, a B cell, or a T cell, to a stimulus. In one embodiment, the response is specific for a particular antigen (an "antigen-specific response"). In another embodiment, the response is against an antibody, such as HAMA response, including an anti-variable region response.

**Immunoconjugate:** A covalent linkage of an effector molecule to an antibody. The effector molecule can be a toxin or a detectable label. Specific, non-limiting examples of toxins include, but are not limited to, abrin, ricin, *Pseudomonas* exotoxin (such as PE35, PE37, PE38, and PE40), diphtheria toxin, anthrax toxin, botulinum toxin, or modified toxins thereof. For example, *Pseudomonas* exotoxin and diphtheria toxin are highly toxic compounds that typically bring about death through liver toxicity. *Pseudomonas* exotoxin and diphtheria toxin, however, can be modified into a form for use as an immunotoxin by removing the native targeting component of the toxin (e.g., domain Ia of *Pseudomonas* exotoxin and the B chain of diphtheria toxin) and replacing it with a different targeting moiety, such as an antibody. Other toxic agents, that directly or indirectly inhibit cell growth or kill cells, include chemotherapeutic drugs, cytokines, for example interleukin-2 or interferon, radioactive isotopes, viral toxins, or proteins contained within, for example, insect, reptile, or amphibian venom. Specific, non-limiting examples of detectable labels include, but are not limited to, radioactive isotopes, enzyme substrates, co-factors, ligands, chemiluminescent agents, fluorescent agents, haptens, or enzymes. A "chimeric molecule" is a targeting moiety, such as a ligand or an antibody, conjugated (attached or coupled) to an effector molecule. The term "conjugated" or "linked" refers to making two polypeptides into one contiguous polypeptide molecule. In one embodiment, an antibody is joined to an effector molecule. In another embodiment, an antibody joined to an effector molecule is further joined to a lipid or other molecule to a protein or peptide to increase its half-life in the antibody. The linkage can be, for example, either by chemical or recombinant means. In one embodiment, the linkage is chemical, wherein a reaction between the antibody moiety and the effector molecule has produced a covalent bond formed between the two

-15-

molecules to form one molecule. A peptide linker (short peptide sequence) can optionally be included between the antibody and the effector molecule.

**Immunogenicity:** A measure of the ability of a targeting protein or therapeutic moiety to elicit an immune response (humoral or cellular) when administered to a  
5 subject.

**Immunoreactivity:** A measure of the ability of an Ig to recognize and bind to a specific antigen.

**Isolated:** An biological component (such as a nucleic acid, peptide or protein) that has been substantially separated, produced apart from, or purified away from other  
10 biological components in the cell of the organism in which the component naturally occurs, *i.e.*, other chromosomal and extrachromosomal DNA and RNA, and proteins. Nucleic acids, peptides and proteins that have been "isolated" thus include nucleic acids and proteins purified by standard purification methods. The term also embraces nucleic  
15 acids, peptides and proteins prepared by recombinant expression in a host cell as well as chemically synthesized nucleic acids.

**Label:** A detectable compound or composition that is conjugated directly or indirectly to another molecule to facilitate detection of that molecule. Specific, non-limiting examples of labels include fluorescent tags, chemiluminescent tags, haptens, enzymatic linkages, and radioactive isotopes.

**Ligand contact residue:** A residue within a CDR that is involved in contact  
20 with a ligand or antigen. A ligand contact residue is also known as a specificity determining residue (SDR). A non-ligand contact residue is a residue in a CDR that does not contact a ligand. A non-ligand contact residue can also be a framework residue.

**Lymphocytes:** A type of white blood cell that is involved in the immune  
25 defenses of the body. There are two main types of lymphocytes: B-cells and T-cells.

**Mammal:** This term includes both human and non-human mammals. Similarly, the term "subject" includes both human and veterinary subjects.



-16-

**Minimally immunogenic:** An antibody that generates a reduced, for example low, immune response when administered to a subject, such as a human subject. In one embodiment, immunogenicity is measured in a competitive binding assay. In one specific, non-limiting example, immunogenicity is the ability of a variant HuCC49 antibody to prevent a parental HuCC49 antibody from binding to CC49 anti-idiotypic antibodies in a patient's serum. If a variant HuCC49 antibody competes with an equal molar amount of the parental HuCC49 antibody (*i.e.* elicits greater than about 50% inhibition of parental HuCC49 binding to anti-idiotypic antibodies in a patient's serum) then the variant HuCC49 antibody is immunogenic. If a variant HuCC49 antibody competes poorly with an equal molar or less amount of the parental HuCC49 antibody (*i.e.* elicits about 50% or less inhibition of parental HuCC49 binding to anti-idiotypic antibodies in a patient's serum) then the variant HuCC49 antibody is minimally immunogenic. In another embodiment, if a five-fold or greater molar concentration of a variant HuCC49 antibody is required to achieve about 50% inhibition of binding of the parental antibody to its cognate anti-idiotypic antibodies present in a subject's sera, then the variant antibody is minimally immunogenic.

**Monoclonal antibody:** An antibody produced by a single clone of B-lymphocytes. Monoclonal antibodies are produced by methods known to those of skill in the art, for instance by making hybrid antibody-forming cells from a fusion of myeloma cells with immune spleen cells.

**Nucleic acid:** A deoxyribonucleotide or ribonucleotide polymer in either single or double stranded form, and unless otherwise limited, encompasses known analogues of natural nucleotides that hybridize to nucleic acids in a manner similar to naturally occurring nucleotides.

**Oligonucleotide:** A linear single-stranded polynucleotide sequence of up to about 200 nucleotide bases in length, for example a polymer of deoxyribonucleotides or ribonucleotides which is at least 6 nucleotides, for example at least 15, 50, 100 or even 200 nucleotides long.

-17-

**Operably linked:** A first nucleic acid sequence is operably linked with a second nucleic acid sequence when the first nucleic acid sequence is placed in a functional relationship with the second nucleic acid sequence. For instance, a promoter is operably linked to a coding sequence if the promoter affects the transcription or  
5 expression of the coding sequence. Generally, operably linked DNA sequences are contiguous and, where necessary to join two protein coding regions, in the same reading frame.

**Phage display:** A technique wherein DNA sequences are amplified and cloned into phage vector to create a "phage library," in which the phage present on their  
10 surface the proteins encoded by the DNA. In one embodiment, a phage library is produced that expresses HuCC49V10 variant immunoglobulins. From the rescued phages, the individual phage clones are selected through interaction of the displayed protein with a ligand, and the specific phage is amplified by infection of bacteria. Antigen specific immunoglobulins can then be expressed and characterized for their  
15 antigen binding and sera reactivity (potential immunogenicity).

**Pharmaceutical agent:** A chemical compound or composition capable of inducing a desired therapeutic or prophylactic effect when properly administered to a subject or a cell. "Incubating" includes a sufficient amount of time for a drug to interact with a cell. "Contacting" includes incubating a drug in solid or in liquid form with a  
20 cell.

A "therapeutically effective amount" is a quantity of a specific substance sufficient to achieve a desired effect in a subject being treated. For instance, this can be the amount necessary to inhibit or suppress growth of a tumor or to decrease a sign or symptom of the tumor in the subject. In one embodiment, a therapeutically effective  
25 amount is the amount necessary to eliminate a tumor. When administered to a subject, a dosage will generally be used that will achieve target tissue concentrations (for example, in tumors) that has been shown to achieve a desired *in vitro* effect.

**Pharmaceutically acceptable carriers:** The pharmaceutically acceptable carriers useful in this disclosure are conventional. *Remington's Pharmaceutical*

-18-

*Sciences*, by E. W. Martin, Mack Publishing Co., Easton, PA, 15<sup>th</sup> Edition (1975), describes compositions and formulations suitable for pharmaceutical delivery of humanized CC49 monoclonal antibodies disclosed herein.

In general, the nature of the carrier will depend on the particular mode of administration employed. For instance, parenteral formulations usually comprise injectable fluids that include pharmaceutically and physiologically acceptable fluids such as water, physiological saline, balanced salt solutions, aqueous dextrose, glycerol or the like as a vehicle. For solid compositions (e.g., powder, pill, tablet, or capsule forms), conventional non-toxic solid carriers can include, for example, pharmaceutical grades of mannitol, lactose, starch, or magnesium stearate. In addition to biologically-neutral carriers, pharmaceutical compositions to be administered can contain minor amounts of non-toxic auxiliary substances, such as wetting or emulsifying agents, preservatives, and pH buffering agents and the like, for example sodium acetate or sorbitan monolaurate.

**Polynucleotide:** A single-stranded linear nucleotide sequence, including sequences of greater than 100 nucleotide bases in length.

**Polypeptide:** A polymer in which the monomers are amino acid residues that are joined together through amide bonds. When the amino acids are alpha-amino acids, either the L-optical isomer or the D-optical isomer can be used, the L-isomers being preferred in nature. The term polypeptide or protein as used herein encompasses any amino acid sequence and includes, but may not be limited to, modified sequences such as glycoproteins. The term polypeptide is specifically intended to cover naturally occurring proteins, as well as those that are recombinantly or synthetically produced.

Substantially purified polypeptide as used herein refers to a polypeptide that is substantially free of other proteins, lipids, carbohydrates or other materials with which it is naturally associated. In one embodiment, the polypeptide is at least 50%, for example at least 80% free of other proteins, lipids, carbohydrates or other materials with which it is naturally associated. In another embodiment, the polypeptide is at least 90% free of other proteins, lipids, carbohydrates or other materials with which it is naturally

-19-

associated. In yet another embodiment, the polypeptide is at least 95% free of other proteins, lipids, carbohydrates or other materials with which it is naturally associated.

Conservative amino acid substitution tables providing functionally similar amino acids are well known to one of ordinary skill in the art. The following six groups  
5 are examples of amino acids that are considered to be conservative substitutions for one another:

- 1) Alanine (A), Serine (S), Threonine (T);
- 2) Aspartic acid (D), Glutamic acid (E);
- 10 3) Asparagine (N), Glutamine (Q);
- 4) Arginine (R), Lysine (K);
- 5) Isoleucine (I), Leucine (L), Methionine (M), Valine (V); and
- 6) Phenylalanine (F), Tyrosine (Y), Tryptophan (W).

15 A non-conservative amino acid substitution can result from changes in: (a) the structure of the amino acid backbone in the area of the substitution; (b) the charge or hydrophobicity of the amino acid; or (c) the bulk of an amino acid side chain.

Substitutions generally expected to produce the greatest changes in protein properties are those in which: (a) a hydrophilic residue is substituted for (or by) a hydrophobic  
20 residue; (b) a proline is substituted for (or by) any other residue; (c) a residue having a bulky side chain, e.g., phenylalanine, is substituted for (or by) one not having a side chain, e.g., glycine; or (d) a residue having an electropositive side chain, e.g., lysyl, arginyl, or histadyl, is substituted for (or by) an electronegative residue, e.g., glutamyl or aspartyl.

25 Variant amino acid sequences may, for example, be 80, 90 or even 95 or 98% identical to the native amino acid sequence. Programs and algorithms for determining percentage identity can be found at the NCBI website.

**Preventing or treating a disease:** Preventing a disease refers to inhibiting completely or in part the development or progression of a disease, for example in a  
30 person who is known to have a predisposition to a disease. An example of a person with a known predisposition is someone with a history of cancer in the family, or who has been exposed to factors that predispose the subject to the development of a tumor.

-20-

Treating a disease refers to a therapeutic intervention that inhibits, or suppressed the growth of a tumor, eliminates a tumor, ameliorates at least one sign or symptom of a disease or pathological condition, or interferes with a pathophysiological process, after the disease or pathological condition has begun to develop.

5           **Protein:** A biological molecule encoded by a gene and comprised of amino acids.

**Recombinant:** A recombinant nucleic acid is one that has a sequence that is not naturally occurring or was made artificially. Artificial combination is often accomplished by chemical synthesis or, more commonly, by the artificial manipulation of isolated segments of nucleic acids, e.g., by genetic engineering techniques.  
10           Similarly, a recombinant protein is one encoded by a recombinant nucleic acid molecule.

**Subject:** Living multi-cellular vertebrate organisms, a category that includes both human and non-human mammals.

15           **TAG (Tumor-Associated Glycoprotein)-72:** A cell-surface glycoprotein that is expressed on human carcinomas, including adenocarcinoma, colorectal, gastric, pancreatic, breast, lung and ovarian carcinomas. TAG-72 has a high molecular weight (greater than  $1 \times 10^6$ ) as measured by size-exclusion chromatography, a density of 1.45 g/ml, is resistant to Chondroitinase digestion, expresses blood group-related  
20           oligosaccharides, and is heavily sialylated with O-glycosidically linked oligosaccharides characteristic of mucins. These characteristics suggest that TAG-72 is a mucin-like molecule (Johnson *et al.*, *Cancer Res.* 46:850-857, 1986, incorporated herein by reference).

**Therapeutically effective amount:** A quantity of a specific substance  
25           sufficient to achieve a desired effect in a subject being treated. For instance, this can be the amount necessary to inhibit or suppress growth of a tumor. In one embodiment, a therapeutically effective amount is the amount necessary to eliminate a tumor. When administered to a subject, a dosage will generally be used that will achieve target tissue

-21-

concentrations (for example, in tumors) that has been shown to achieve a desired *in vitro* effect.

**Treatment:** Refers to both prophylactic inhibition of initial infection or disease, and therapeutic interventions to alter the natural course of an untreated infection or disease process, such as a tumor growth or an infection with a bacteria.

**Tumor:** A neoplasm that may be either malignant or non-malignant. Tumors of the same tissue type are primary tumors originating in a particular organ (such as breast, prostate, bladder or lung). Tumors of the same tissue type may be divided into tumor of different sub-types (a classic example being bronchogenic carcinomas (lung tumors) which can be an adenocarcinoma, small cell, squamous cell, or large cell tumor). Breast cancers can be divided histologically into scirrhous, infiltrative, papillary, ductal, medullary and lobular. In one embodiment, cells in a tumor express TAG-72.

**Variable region (also variable domain or V domain):** The regions of both the light-chain and the heavy-chain on an Ig that contain antigen-binding sites. The regions are composed of polypeptide chains containing four relatively invariant "framework regions" (FRs) and three highly variant "hypervariable regions" (HVs). Because the HVs constitute the binding site for antigen(s) and determine specificity by forming a surface complementarity to the antigen, they are more commonly termed the "complementarity-determining regions," or CDRs, and are denoted CDR1, CDR2, and CDR3. Because both of the CDRs from the heavy- and light-chain domains contribute to the antigen-binding site, it is the three-dimensional combination of the heavy and the light chain that determines the final antigen specificity.

Within the heavy- and light-chain, the framework regions surround the CDRs. Proceeding from the N-terminus of a heavy or light chain, the order of regions is: FR1-CDR1-FR2-CDR2-FR3-CDR3-FR4. As used herein, the term "variable region" is intended to encompass a complete set of four framework regions and three complementarity-determining regions. Thus, a sequence encoding a "variable region"

-22-

would provide the sequence of a complete set of four framework regions and three complementarity-determining regions.

Unless otherwise explained, all technical and scientific terms used herein have  
5 the same meaning as commonly understood by one of ordinary skill in the art to which  
this invention belongs. The singular terms “a,” “an,” and “the” include plural referents  
unless context clearly indicates otherwise. Similarly, the word “or” is intended to  
include “and” unless the context clearly indicates otherwise. Hence “comprising A or  
B” means “including A or B, or A and B.” It is further to be understood that all base  
10 sizes or amino acid sizes, and all molecular weight or molecular mass values, given for  
nucleic acids or polypeptides are approximate, and are provided for description.  
Although methods and materials similar or equivalent to those described herein can be  
used in the practice or testing of the present invention, suitable methods and materials  
are described below. All publications, patent applications, patents, and other references  
15 mentioned herein are incorporated by reference in their entirety. In case of conflict, the  
present specification, including explanations of terms, will control. In addition, the  
materials, methods, and examples are illustrative only and not intended to be limiting.

#### **Humanized CC49 antibodies**

20 Disclosed herein are humanized monoclonal CC49 antibodies that have a non-  
conservative amino acid substitution in the light chain complementarity determining  
region (LCDR) 3 of the CC49 antibody grafted onto a human antibody framework. In  
one embodiment, the humanized CC49 antibody has a non-conservative amino acid  
substitution of a ligand contact residue in LCDR3. In several examples, the CC49  
25 antibody has a non-conservative substitution of a ligand contact residue at position 89,  
90, 91, 92, 93, 94, 95 or 96 of LCDR3 (Table 1).

**TABLE 1** HuCC49V10 CDR sequences

|       |            |            |            |            |            |            |            |            |            |
|-------|------------|------------|------------|------------|------------|------------|------------|------------|------------|
| LCDR3 | 89         | 90         | 91         | 92         | 93         | 94         | 95         | 96         | 97         |
|       | <b>Gln</b> | <b>Gln</b> | <b>Tyr</b> | <b>Tyr</b> | <b>Ser</b> | <b>Tyr</b> | <b>Pro</b> | <b>Leu</b> | <b>Ser</b> |
| HCDR2 | 50         | 51         | 52         | a          | 53         | 54         | 55         | 56         | 57         |
|       | <b>Tyr</b> | <b>Phe</b> | <b>Ser</b> | <b>Pro</b> | <b>Gly</b> | <b>Asn</b> | <b>Asp</b> | <b>Asp</b> | <b>Phe</b> |
| HCDR2 | 58         | 59         | 60         | 61         | 62         | 63         | 64         | 65         |            |
|       | <b>Lys</b> | <b>Tyr</b> | <b>Ser</b> | <b>Gln</b> | <b>Lys</b> | <b>Phe</b> | <b>Gln</b> | <b>Gly</b> |            |

In bold: The SDRs that are targeted for mutation.

5 In italic: The residues of HuCC49 already modified to generate HuCC49V10.

In one embodiment, the humanized CC49 antibody has a non-conservative amino acid substitution at position 91 of LCDR3. In one specific, non-limiting example, the humanized CC49 antibody has a tyrosine to proline substitution at position 10 91 of LCDR3 (see HuCC49V10-14 in Figure 1 and in Table 2).

**TABLE 2** Mutations in variants\* isolated by phage display

|              | LCDR1      | LCDR3      |            |            |            |            |            |            |            |            |  |
|--------------|------------|------------|------------|------------|------------|------------|------------|------------|------------|------------|--|
|              | 27b        | 89         | 90         | 91         | 92         | 93         | 94         | 95         | 96         | 97         |  |
| HuCC49V10    | <i>Val</i> | <b>Gln</b> | <b>Gln</b> | <b>Tyr</b> | <b>Tyr</b> | <b>Ser</b> | <b>Tyr</b> | <b>Pro</b> | <b>Leu</b> | <b>Ser</b> |  |
| HuCC49V10-7  | <i>Leu</i> | -          | -          | -          | -          | <b>Leu</b> | -          | -          | -          | -          |  |
| HuCC49V10-10 | -          | -          | -          | <b>Ser</b> | -          | -          | -          | -          | -          | -          |  |
| HuCC49V10-12 | -          | -          | -          | -          | -          | <b>Leu</b> | -          | -          | -          | -          |  |
| HuCC49V10-13 | -          | -          | -          | -          | -          | -          | <b>Thr</b> | -          | -          | -          |  |
| HuCC49V10-14 | -          | -          | -          | <b>Pro</b> | -          | -          | -          | -          | -          | -          |  |
| HuCC49V10-15 | <i>Leu</i> | -          | -          | <b>Pro</b> | -          | -          | -          | -          | -          | -          |  |

| HCDR2                           |            |            |            |            |            |            |            |            |            |  |
|---------------------------------|------------|------------|------------|------------|------------|------------|------------|------------|------------|--|
|                                 | 50         | 51         | 52         | a          | 53         | 54         | 55         | 56         | 57         |  |
| HuCC49V10                       | <b>Tyr</b> | <b>Phe</b> | <b>Ser</b> | <b>Pro</b> | <b>Gly</b> | <b>Asn</b> | <b>Asp</b> | <b>Asp</b> | <b>Phe</b> |  |
| HuCC49V10-13                    | -          | -          | <b>Asn</b> | -          | -          | -          | -          | -          | -          |  |
| HuCC49V10-7, -10, -12, -14, -15 | -          | -          | -          | -          | -          | -          | -          | -          | -          |  |

| HCDR2 (continued)               |            |            |            |            |            |            |            |            |  |
|---------------------------------|------------|------------|------------|------------|------------|------------|------------|------------|--|
|                                 | 58         | 59         | 60         | 61         | 62         | 63         | 64         | 65         |  |
| HuCC49V10                       | <b>Lys</b> | <b>Tyr</b> | <b>Ser</b> | <b>Gln</b> | <b>Lys</b> | <b>Phe</b> | <b>Gln</b> | <b>Gly</b> |  |
| HuCC49V10-13                    | -          | -          | -          | -          | -          | -          | -          | -          |  |
| HuCC49V10-7, -10, -12, -14, -15 | -          | -          | -          | -          | -          | -          | -          | -          |  |

15 Bold: The SDRs targeted for mutation to generate a phage display library.

Italic: The residues of HuCC49 already modified to generate HuCC49V10.

\*Variants HuCC49V10-7, -10, -12, -13, -14, and -15 can be derived from HuCC49V10 as described in Examples 1-4.



-24-

In one embodiment, the humanized CC49 antibody has no more than one non-conservative amino acid substitution in LCDR3. However, the humanized CC49 antibody can include no more than two, no more than three, no more than four, no more than five, or no more than nine non-conservative amino acid substitutions in LCDR3.

5 In some embodiments, the CC49 antibody has a non-conservative amino acid substitution at position 91, an additional non-conservative substitution of a ligand contact residue at position 89, 90, 91, 92, 93, 94, 95 or 96 of LCDR3 (Table 1), and has a high binding affinity for TAG-72. In another embodiment, the humanized CC49 antibody has a non-conservative amino acid substitution at position 91, and has an  
10 additional non-conservative amino acid substitution of a non-ligand contact residue of LCDR3.

A humanized CC49 monoclonal antibody including a non-conservative amino acid substitution in LCDR3 can also include an additional non-conservative amino acid substitution in a region other than LCDR3. For example, an additional non-  
15 conservative amino acid substitution can be a non-conservative substitution in another LCDR or in an HCDR. Specific, non-limiting examples of a humanized CC49 monoclonal antibody that includes more than one non-conservative substitution are a humanized CC49 monoclonal antibody with a non-conservative substitution in an LCDR3 ligand contact residue and a non-conservative substitution in an LCDR non-  
20 ligand contact residue, or a non-conservative substitution in LCDR3 and a non-conservative substitution in HCDR2. In several embodiments, the CC49 antibody has a non-conservative substitution of a ligand contact residue at position 50, 51, 52, 52a, 53, 54, 56, 57, or 58 of HCDR2 (Table 1) in addition to an LCDR3 non-conservative substitution. In another embodiment, the humanized CC49 antibody has an additional  
25 non-conservative amino acid substitution in a framework residue.

In one embodiment, the humanized CC49 antibody has a conservative amino acid substitution in addition to an LCDR3 non-conservative substitution, such as, but not limited to, a conservative substitution in a CDR in addition to an LCDR3 non-conservative substitution. In other specific non-limiting examples, the humanized

CC49 antibody has a conservative substitution in an LCDR or in an HCDR in addition to an LCDR3 non-conservative substitution. In other specific non-limiting examples, the humanized CC49 antibody has a conservative substitution in LCDR1, LCDR2, LCDR3, HCDR1, HCDR2, or HCDR3 in addition to an LCDR3 non-conservative substitution. Thus in another specific, non-limiting example, the humanized CC49 antibody has a conservative amino acid substitution at position 27b of LCDR1 and a non-conservative amino acid substitution at position 91 of LCDR3. A specific, non-limiting example of a conservative amino acid substitution is a valine to leucine substitution at position 27b of LCDR1 and specific, non-limiting example of a non-conservative amino acid substitution is a tyrosine to proline substitution at position 91 of LCDR3 (see HuCC49V10-15 in Figure 1 and in Table 2).

In one embodiment, the humanized CC49 antibody has a CH2 domain deletion. In one specific embodiment, a humanized CC49 antibody with a CH2 domain deletion is cleared more quickly from the plasma compared to the parent CC49 antibody. In another specific embodiment, a humanized CC49 antibody with a CH2 domain deletion has reduced immunogenicity compared to the parent CC49 antibody.

The humanized monoclonal antibodies disclosed herein bind TAG-72 with high binding affinity. In one embodiment, the humanized CC49 antibody has a high binding affinity for TAG-72 that is at least about  $1.2 \times 10^{-8}$  M. In other embodiments, the humanized CC49 antibody has a high binding affinity for TAG-72 that is at least about  $1.2 \times 10^{-8}$ , about  $1.5 \times 10^{-8}$ , about  $2.0 \times 10^{-8}$ , about  $2.5 \times 10^{-8}$ , about  $3.0 \times 10^{-8}$ , about  $3.5 \times 10^{-8}$ , about  $4.0 \times 10^{-8}$ , about  $4.5 \times 10^{-8}$ , or about  $5.0 \times 10^{-8}$  M. In one embodiment, the humanized CC49 antibody has a high binding affinity if it has a significantly lower antigen/antibody dissociation rate compared to that of the parent CC49 antibody. In another embodiment, the humanized CC49 antibody has a high binding affinity if less antibody is required for a 50% inhibition of the binding of  $^{125}\text{I}$ -labeled HuCC49 to BSM compared to the parent CC49 antibody. In yet another embodiment, the humanized CC49 antibody has a high binding affinity when the number of cells labeled with

-26-

humanized CC49 antibody is significantly greater than the number of cells labeled by the parent CC49 antibody, as measured by flow cytometry.

Immunogenicity of variant HuCC49 antibodies can be measured in a competitive binding assay as the ability of a variant HuCC49 antibody to prevent a parent CC49 or HuCC49 antibody from binding to anti-idiotypic antibodies in a human subject's serum. In one embodiment, a variant humanized CC49 antibody with a non-conservative amino acid substitution in LCDR3 is minimally immunogenic in a subject. In other embodiments, the variant humanized CC49 antibody with an additional amino acid substitution is minimally immunogenic. In one embodiment, at least about five-fold higher molar concentration of the variant humanized CC49 antibody, than that of the parental HuCC49 antibody, is required to elicit 50% inhibition of the parental HuCC49 binding to its cognate anti-idiotypic antibodies in a subject's sera. In other embodiments, at least about ten-fold, at least about twenty five-fold, at least about fifty-fold, at least about seventy-fold, or at least about one hundred-fold higher molar concentration of the variant humanized CC49 antibody, than that of the parental antibody, is required to elicit 50% inhibition of the parental HuCC49 binding to its cognate anti-idiotypic antibodies in a subject's sera.

Effector molecules, *e.g.*, therapeutic, diagnostic, or detection moieties, can be linked to a humanized CC49 antibody that specifically binds TAG-72, using any number of means known to those of skill in the art. Thus, a humanized CC49 antibody with a non-conservative amino acid substitution can have any one of a number of different types of effector molecules linked to it. In one embodiment, the humanized CC49 antibody is linked to a detectable label. In some embodiments, the humanized CC49 antibody is linked to a radioactive isotope, an enzyme substrate, a co-factor, a ligand, a chemiluminescent agent, a fluorescent agent, a hapten, or an enzyme. In another embodiment, the humanized CC49 antibody is linked to a cytotoxin. In other embodiments, the humanized CC49 antibody is linked to a chemotherapeutic drug, a radioactive isotope, a bacterially-expressed toxin, a virally-expressed toxin, or a venom protein. In yet other embodiments, the humanized CC49 antibody is linked to a

-27-

cytokine. Specific, non-limiting examples of cytokines are IL-2, IL-4, IL-10, TNF-alpha and IFN-gamma. In some embodiments, the humanized CC49 antibody is linked to an effector molecule by a covalent or non-covalent means.

## 5                    **Pharmaceutical Compositions and Therapeutic Methods**

Pharmaceutical compositions are disclosed herein that include a humanized CC49 monoclonal antibody, such as HuCC49V10-14 or HuCC49V10-15, and can be formulated with an appropriate solid or liquid carrier, depending upon the particular mode of administration chosen. In addition, a humanized CC49 monoclonal antibody  
10 linked to an effector molecule (*i.e.*, toxin, chemotherapeutic drug, or detectable label) can be prepared in pharmaceutical compositions.

The pharmaceutically acceptable carriers and excipients useful in this disclosure are conventional. For instance, parenteral formulations usually comprise injectable fluids that are pharmaceutically and physiologically acceptable fluid vehicles such as  
15 water, physiological saline, other balanced salt solutions, aqueous dextrose, glycerol or the like. Excipients that can be included are, for instance, other proteins, such as human serum albumin or plasma preparations. If desired, the pharmaceutical composition to be administered can also contain minor amounts of non-toxic auxiliary substances, such as wetting or emulsifying agents, preservatives, and pH buffering agents and the like, for  
20 example sodium acetate or sorbitan monolaurate.

The dosage form of the pharmaceutical composition will be determined by the mode of administration chosen. For instance, in addition to injectable fluids, topical, inhalation, oral and suppository formulations can be employed. Topical preparations can include eye drops, ointments, sprays and the like. Inhalation preparations can be  
25 liquid (e.g., solutions or suspensions) and include mists, sprays and the like. Oral formulations can be liquid (e.g., syrups, solutions or suspensions), or solid (e.g., powders, pills, tablets, or capsules). Suppository preparations can also be solid, gel, or in a suspension form. For solid compositions, conventional non-toxic solid carriers can include pharmaceutical grades of mannitol, lactose, starch, or magnesium stearate.

-28-

Actual methods of preparing such dosage forms are known, or will be apparent, to those skilled in the art.

The pharmaceutical compositions that include a humanized CC49 monoclonal antibody can be formulated in unit dosage form suitable for individual administration of precise dosages. In addition, the pharmaceutical compositions may be administered as an immunoprophylactic in a single dose schedule or as an immunotherapy in a multiple dose schedule. A multiple dose schedule is one in which a primary course of treatment may be with more than one separate dose, for instance 1-10 doses, followed by other doses given at subsequent time intervals as needed to maintain or reinforce the action of the compositions. Treatment can involve daily or multi-daily doses of compound(s) over a period of a few days to months, or even years. Thus, the dosage regime will also, at least in part, be determined based on the particular needs of the subject to be treated and will be dependent upon the judgement of the administering practitioner. In one specific, non-limiting example, a unit dosage can be about 0.1 to about 10 mg per patient per day. Dosages from about 0.1 up to about 100 mg per patient per day may be used, particularly if the agent is administered to a secluded site and not into the circulatory or lymph system, such as into a body cavity, into a lumen of an organ, or directly into a tumor. In one embodiment, about 10 mCi of a radiolabeled humanized CC49 monoclonal antibody is administered to a subject. In other embodiments, about 15 mCi, about 20 mCi, about 50 mCi, about 75 mCi or about 100 mCi of a radiolabeled humanized CC49 monoclonal antibody is administered to a subject. The amount of active compound(s) administered will be dependent on the subject being treated, the severity of the affliction, and the manner of administration, and is best left to the judgment of the prescribing clinician. Within these bounds, the formulation to be administered will contain a quantity of the active component(s) in amounts effective to achieve the desired effect in the subject being treated.

The compounds of this disclosure can be administered to humans on whose tissues they are effective in various manners such as topically, orally, intravenously, intramuscularly, intraperitoneally, intranasally, intradermally, intrathecally,

-29-

subcutaneously, via inhalation or via suppository. The particular mode of administration and the dosage regimen will be selected by the attending clinician, taking into account the particulars of the case (*e.g.* the subject, the disease, the disease state involved, and whether the treatment is prophylactic).

5           In one embodiment, a therapeutically effective amount of a humanized CC49 antibody, such as HuCC49V10-14 or HuCC49V10-15, is the amount of humanized CC49 antibody necessary to inhibit further growth of a TAG-72-expressing tumor or suppress the growth of a TAG-72-expressing tumor, without eliciting a HAMA response in the patient receiving the treatment. In other embodiments, a therapeutically  
10           effective amount of humanized CC49 antibody is the amount of humanized CC49 antibody necessary to eliminate or reduce the size of a TAG-72-expressing tumor, without eliciting a HAMA response. Specific, non-limiting examples of TAG-72-expressing tumors are adenocarcinoma, colorectal, gastric, pancreatic, breast, lung, and ovarian tumors. In yet another embodiment, a therapeutically effective amount of  
15           humanized CC49 antibody is an amount of humanized CC49 antibody that is effective at reducing a sign or a symptom of the tumor and induces a minimal immune response.

          A therapeutically effective amount of a humanized CC49 monoclonal antibody, such as HuCC49V10-14 or HuCC49V10-15, can be administered in a single dose, or in several doses, for example daily, during a course of treatment. In one  
20           embodiment, treatment continues until a therapeutic result is achieved. However, the effective amount of humanized CC49 antibody will be dependent on the subject being treated, the severity and type of the affliction, and the manner of administration of the therapeutic(s).

          Controlled release parenteral formulations of a humanized CC49 monoclonal  
25           antibody can be made as implants, oily injections, or as particulate systems. For a broad overview of protein delivery systems (see Banga, A.J., *Therapeutic Peptides and Proteins: Formulation, Processing, and Delivery Systems*, Technomic Publishing Company, Inc., Lancaster, PA, 1995). Particulate systems include microspheres, microparticles, microcapsules, nanocapsules, nanospheres, and nanoparticles.

-30-

Microcapsules contain the therapeutic protein as a central core. In microspheres the therapeutic is dispersed throughout the particle. Particles, microspheres, and microcapsules smaller than about 1  $\mu\text{m}$  are generally referred to as nanoparticles, nanospheres, and nanocapsules, respectively. Capillaries have a diameter of approximately 5  $\mu\text{m}$  so that only nanoparticles are administered intravenously. Microparticles are typically around 100  $\mu\text{m}$  in diameter and are administered subcutaneously or intramuscularly (see Kreuter, J., *Colloidal Drug Delivery Systems*, J. Kreuter, ed., Marcel Dekker, Inc., New York, NY, pp. 219-342, 1994; Tice & Tabibi, *Treatise on Controlled Drug Delivery*, A. Kydonieus, ed., Marcel Dekker, Inc. New York, NY, pp. 315-339, 1992).

Polymers can be used for ion-controlled release. Various degradable and nondegradable polymeric matrices for use in controlled drug delivery are known in the art (Langer, R., *Accounts Chem. Res.* 26:537, 1993). For example, the block copolymer, polaxamer 407 exists as a viscous yet mobile liquid at low temperatures but forms a semisolid gel at body temperature. It has shown to be an effective vehicle for formulation and sustained delivery of recombinant interleukin-2 and urease (Johnston *et al.*, *Pharm. Res.* 9:425, 1992; and Pec *et al.*, *J. Parent. Sci. Tech.* 44:58, 1990). Alternatively, hydroxyapatite has been used as a microcarrier for controlled release of proteins (Ijntema *et al.*, *Int. J. Pharm.* 112:215, 1994). In yet another aspect, liposomes are used for controlled release as well as drug targeting of the lipid-capsulated drug (Betageri, *et al.*, *Liposome Drug Delivery Systems*, Technomic Publishing Co., Inc., Lancaster, PA, 1993). Numerous additional systems for controlled delivery of therapeutic proteins are known (e.g., U.S. Pat. No. 5,055,303, 5,188,837, 4,235,871, 4,501,728, 4,837,028, 4,957,735 and 5,019,369, 5,055,303; 5,514,670; 5,413,797; 5,268,164; 5,004,697; 4,902,505; 5,506,206, 5,271,961; 5,254,342 and 5,534,496).

Site-specific administration of the disclosed compounds can be used, for instance by applying the humanized CC49 antibody to a pre-cancerous region, a region of tissue from which a tumor has been removed, or a region suspected of being prone to tumor development. In some embodiments, sustained intra-tumoral (or near-tumoral)

-31-

release of the pharmaceutical preparation that includes a therapeutically effective amount of the humanized CC49 antibody may be beneficial.

The present disclosure also includes therapeutic uses of humanized CC49 monoclonal antibodies that are non-covalently or covalently linked to effector molecules. In one specific embodiment, the humanized CC49 monoclonal antibody is covalently linked to an effector molecule that is toxic to a tumor or cell expressing TAG-72. In one specific, non-limiting example, the effector molecule is a cytotoxin. In other specific, non-limiting examples the effector molecule is a radioactive isotope, a chemotherapeutic drug, a bacterially-expressed toxin, a virally-expressed toxin, a venom protein, or a cytokine. Humanized CC49 monoclonal antibodies covalently linked to an effector molecule have a variety of uses. For example, a humanized CC49 antibody linked to a radioactive isotope us if use in immunotherapy. A humanized CC49 antibody covalently linked to a radioactive isotope is of use to localize a tumor in radioimmunoguided surgery, such that the tumor can be removed.

The present disclosure also includes combinations of a humanized CC49 monoclonal antibody, such as HuCC49V10-14 or HuCC49V10-15, with one or more other agents useful in the treatment of tumors. For example, the compounds of this disclosure can be administered in combination with effective doses of immunostimulants, anti-cancer agents, anti-inflammatory agents, anti-infectives, and/or vaccines. The term "administration in combination" or "co-administration" refers to both concurrent and sequential administration of the active agents. A subject that is suffering from a tumor, or is predisposed to the development of a tumor, will be a candidate for treatment using the therapeutic methods disclosed herein.

#### 25 **Diagnostic Methods and Kits**

A method is provided herein for the *in vivo* or *in vitro* detection of TAG-72-expressing tumors or cells. An *in vivo* detection method can localize any tumor or cell that expresses TAG-72 in a subject. In one embodiment, a humanized CC49 antibody is administered to the subject for a sufficient amount of time for the antibody to localize to



-32-

the tumor or cell in the subject and to form an immune complex with TAG-72. The immune complex can then be detected. In one specific, non-limiting example detection of an immune complex is performed by immunoscintigraphy. Other specific, non-limiting examples of immune complex detection include radiolocalization, radioimaging, or fluorescence imaging. In another embodiment, the antibody is linked to an effector molecule. In one specific, non-limiting embodiment, the effector molecule is a detectable label. Specific, non-limiting examples of detectable labels include a radioactive isotope, an enzyme substrate, a co-factor, a ligand, a chemiluminescent agent, a fluorescent agent, a hapten, or an enzyme.

10 A method of detecting tumors in a subject includes the administration of a humanized CC49 antibody complexed to an effector molecule, such as a radioactive isotope. In one embodiment, a humanized CC49 antibody complexed to an effector molecule, such as a radioactive isotope, is administered to a subject prior to surgery or treatment. In another embodiment, a humanized CC49 antibody complexed to an effector molecule, such as a radioactive isotope, is administered to a subject following surgery or treatment. After a sufficient amount of time has elapsed to allow for the administered radiolabeled antibody to localize to the tumor, the tumor is detected. In one specific embodiment, the detection step is performed prior to surgery. In another embodiment, the detection step is performed during surgery, for example to detect the location of the tumor prior to removing it, as in radioimmunoguided surgery. In yet another embodiment, the detection step is performed after surgery to ensure the complete removal of the tumor, or to detect a recurrence of the tumor. In one specific, non-limiting example, a radiolabeled immune complex is detected using a hand held gamma detection probe. Primary tumors, metastasized tumors or cells expressing TAG-72 can be detected.

In another embodiment, a humanized CC49 antibody and a secondary antibody are administered to the subject for a sufficient amount of time for the humanized CC49 antibody to form an immune complex with TAG-72 on a tumor or cell, and for the secondary antibody to form an immune complex with the humanized CC49 antibody.

-33-

In one embodiment, the humanized CC49 antibody is complexed with the secondary antibody prior to their administration to the subject. In one specific, non-limiting embodiment, the secondary antibody is linked to a detectable label. In one embodiment, the immune complex, which includes TAG-72, the humanized CC49 antibody, and the secondary antibody linked to a detectable label, is detected as described above.

An *in vitro* detection method can screen any biological sample containing any tumor or cell that expresses TAG-72. Such samples include, but are not limited to, tissue from biopsies, autopsies, and pathology specimens. Biological samples also include sections of tissues, such as frozen sections taken for histological purposes. Biological samples further include body fluids, such as blood, serum, saliva, or urine. A biological sample is typically obtained from a mammal, such as a human. In one embodiment the subject has a colorectal tumor. In other embodiments, the subject has a gastric tumor, a pancreatic tumor, a breast tumor, a lung tumor, an adenocarcinoma, or an ovarian tumor. Other biological samples that can be detected by the *in vitro* detection method include samples of cultured cells that express TAG-72.

In one embodiment, a method is provided for detecting a TAG-72-expressing tumor or cell. Kits for detecting a TAG-72-expressing tumor or cell will typically comprise a humanized CC49 antibody that specifically binds TAG-72. In some embodiments, an antibody fragment, such as an Fv fragment is included in the kit. In a further embodiment the antibody is an immunoconjugate. In some embodiments, the antibody is conjugated to a detectable label (e.g. radioactive isotope, enzyme substrate, co-factor, ligand, fluorescent agent, hapten, enzyme, or chemiluminescent agent).

The kit can include instructional materials disclosing means of use of an antibody that specifically binds TAG-72 or fragment thereof (e.g. for detection of TAG-72-expressing cells in a sample). The instructional materials may be written, in an electronic form (e.g. computer diskette or compact disk) or may be visual (e.g. video files). The kits may also include additional components to facilitate the particular application for which the kit is designed. Thus, for example, the kit may additionally

-34-

contain means of detecting a label (e.g. enzyme substrates for enzymatic labels, filter sets to detect fluorescent labels, appropriate secondary labels such as a secondary antibody, or the like). In one embodiment, the kit contains a secondary antibody that is conjugated to a detectable label. The kits may additionally include buffers and other reagents, such as an antigen (e.g. purified TAG-72) routinely used for the practice of a particular method. Such kits and appropriate contents are well known to those of skill in the art.

In one embodiment of the present invention, the diagnostic kit comprises an immunoassay. Although the details of the immunoassays may vary with the particular format employed, the method of detecting TAG-72 or fragment thereof in a biological sample generally includes the steps of contacting the biological sample with an antibody which specifically reacts, under immunologically reactive conditions, to TAG-72. The antibody is allowed to specifically bind under immunologically reactive conditions to form an immune complex, and the presence of the immune complex (bound antibody) is detected directly or indirectly.

The invention is illustrated by the following non-limiting Examples.

20

## EXAMPLES

### EXAMPLE 1

#### **Construction of the Variant HuCC49V10 Antibody Phage Library**

A phage display library of isolates was derived from the humanized CC49 variant HuCC49V10 (Tamura *et al.*, *J. Immunol.*, 164: 1432, 2000) by the mutagenesis of the LCDR3 and the HCDR2, the two CDRs that were earlier shown to be the targets of the patient's anti-variable region response. Primer-induced mutagenesis was used to replace the targeted SDRs of the two CDRs (Table 1) with all possible residues located

-35-

at the corresponding positions in human antibodies (Table 3). A dual step PCR (Landt *et al.*, *Gene* 96: 125, 1990) was used for DNA amplification.

**TABLE 3**5 **Residue substitutions in the library**

| Encoded aa             |   |
|------------------------|---|
| <b>L-CDR3</b>          |   |
| Position 89:           | R,L,N,K,M,H,Q,I,S                       |
| Position 91:           | S,Y,R,A,G,H,T,C,P,D,N                   |
| Positions 92,93,94,96: | S,R,L,V,A,G,T,P,Y,F,D,N,I,W,H,E,L,Q,M,C |
| <b>H-CDR2</b>          |   |
| Positions 50,52,53,58: | S,R,L,V,A,G,T,P,Y,F,D,N,I,W,H,E,L,Q,M,C |
| Position 54:           | S,T,D,G,F,N,R,L,I,A,V,Y,C,H,P           |
| Position 56:           | S,T,A,G,V,L,R,I,D,E,Y,C,W,F,L,N,M,      |

**DNA amplification**

For the first step of DNA amplification, a primer derived from the leader sequence of the light (SEQ ID NO: 1) or heavy (SEQ ID NO: 9) chain was used as the  
 10 5' primer, while the degenerate mutagenic primers for each of the light (SEQ ID NO: 2-7) or heavy (SEQ ID NO: 10-15) chain were mixed together and used as 3' primers (see Table 4 for primer sequences of SEQ ID NO: 1-12). The degenerate primers were mixed in a ratio that made all the 3' primers equimolar in concentration. For the second step of the amplification, the gel purified product of the first round of PCR served as the  
 15 5' primer, while the 3' primer was derived from the 3'-end of the light chain (SEQ ID NO: 8) or the 3'-end of the CH1 region of the heavy chain (SEQ ID NO: 16).

**Table 4**

**Oligonucleotide primers used to generate the library of genes encoding light chains and Fd regions of the variants of HuCC49V10**

| Name                 | Sequence   | SEQ ID NO. |
|----------------------|--|------------|
| 5' V <sub>L</sub>    | 5'-TGAGCGGCACAGAGCTCGACATCGTGATGAG-3'  | 1          |
| 3' 89 V <sub>L</sub> | 5'-AGCTATAATACTGSHKACAATAATAG-3'   | 2          |
| 3' 91 V <sub>L</sub> | 5'-GGGGATAGCTATAGBNCTGCTGACAA-3'   | 3          |
| 3' 92 V <sub>L</sub> | 5'-TGAGGGGATAGCTSNNATACTGCTGA-3'   | 4          |
| 3' 93 V <sub>L</sub> | 5'-AGCTGAGGGGATASNNATAATACTGC-3'   | 5          |
| 3' 94 V <sub>L</sub> | 5'-CGAAGCTGAGGGGSNNGCTATAATAC-3'   | 6          |
| 3' 96 V <sub>L</sub> | 5'-CAGCGCCGAAGCTSNNGGGATAGCTA-3'   | 7          |
| 3' V <sub>L</sub>    | 5'-GCGCCGTC <del>TAGA</del> ATTAACACTCTCCCTGTTGAAGCTCTTTGTGACGGGCGAACTCAG-3' | 8          |
| 5' V <sub>H</sub>    | 5'-GCCCGTACCA <del>TGG</del> CCCAAGTCCAGCTGGTGCA-3'                          | 9          |
| 3' 50 V <sub>H</sub> | 5'-CGGGGAGAGAAASNNTCCAATCCACT-3'   | 10         |
| 3' 52 V <sub>H</sub> | 5'-CGTTCCGGGSNNGAAATATCCAA-3'  | 11         |
| 3' 53 V <sub>H</sub> | 5'-AATCATCGTTSNNGGGAGAGAAAT-3'   | 12         |
| 3' 54 V <sub>H</sub> | 5'-AAAAATCATCGNNTCCGGGAGAGA-3'   | 13         |
| 3' 56 V <sub>H</sub> | 5'-AGTACTTAAASNHATCGTTCCGG-3'  | 14         |
| 3' 58 V <sub>H</sub> | 5'-TCTGTGAGTASNNAATCATCGT-3'   | 15         |
| 3' V <sub>H</sub>    | 5'-GCATGTACTAGTTTTCACACAAGATTGG-3'   | 16         |

5 S=G/C      H= A/C/T      K=G/T      B=G/T/C      N=A/G/C/T

The oligonucleotide primers used for DNA amplification, listed in Table 4, were supplied by Biosynthesis Inc. (Lewisville, TX). They were purified by polyacrylamide gel electrophoresis. Each of the 5' primers used for the first step PCR and the 3' primers used for the second step PCR carry a unique restriction endonuclease site at its flank. The 5' V<sub>L</sub> (SEQ ID NO: 1) carried a *Sac* I site, while the 3' V<sub>L</sub> (SEQ ID NO: 8) had *Xba* I site. The 5' V<sub>H</sub> (SEQ ID NO: 9) and the 3' V<sub>H</sub> primers carried *Nco* I and *Spe* I sites, respectively. To eliminate an existing *Sac* I site from the constant region of the kappa chain, a point mutated *Sac* I site was incorporated into the 3' V<sub>L</sub> primer.

15 The first PCR was carried out in a final volume of 50 µl containing 10 ng of template, 200 µM dNTPs and 5 units of *Taq* polymerase (Gibco BRL, Gaithersburg, MD). The PCR mix contained 200 pmol of each of the 5' and 3' primers; the latter being a mixture of degenerate primers. Thirty cycles of a denaturing step at 94° C for 30

-37-

seconds, a primer annealing step at 55° C for 50 seconds, and a polymerization step at 72° C for 60 seconds were followed by a final primer extension step for 10 minutes at 72° C. The second PCR consisted of 30 cycles of denaturation (94° C for 30 seconds), primer annealing (55° C for 90 seconds) and polymerization (72° C for 90 seconds) followed by a final extension for 10 minutes at 72° C.

### *Phagemid Vector*

A phagemid vector pComb3H-SS (Barbas, C. F. and Burton, D. R. Cold Spring Harbor Laboratory Course on Monoclonal Antibodies From Combinatorial Libraries, Cold Spring Harbor, NY, 1994) was used to generate a combinatorial library of the mutated HuCC49V10 Fabs displayed on the surface of the filamentous phage M13. The SS designation is used for pComb3H vector when it carries a 1200 bp stuffer sequence in place of Ig light chain (SS I), and a 300 bp sequence as a stuffer in place of Ig heavy chain (SS II). PComb3H-SS, a modified version of the original pComb3 vector (Barbas et al., *Proc. Natl. Acad. Sci. USA* 88: 7978, 1991), was obtained from Dr. Carlos Barbas of Scripps Research Institute, LaJolla, CA.

pComb3 contains both the origin of replication of the plasmid ColE1 and origin of replication of the filamentous bacteriophage  $\phi$ 1. The plasmid contains the gene for ampicillin (carbenicillin) resistance. More importantly, it is designed to carry a number of unique and convenient restriction endonuclease sites (Figure 2). The restriction fragment *EcoR* / *Sac* I located downstream from *lac Z* promoter carries a ribosomal binding site and the outer membrane (*omp A*) leader sequence of *E. coli*. A sequence encoding an Ig light chain can be inserted as a *Sac* / *Xba* I fragment, immediately downstream from the *omp A*. Located 3' to *omp A* is a *Xba* / *Nco* I fragment that contains a stop codon for the translation of the light chain, a ribosomal binding site for the translation of the second protein from the bicistronic message, and a *pel B* leader peptide of *E. carotovora*. A sequence encoding the Fd fragment can be inserted as a *Nco* / *Spe* I fragment, immediately downstream from the *pel B* leader. This is followed by a *Spe* / *Not* I fragment that contains the carboxy-terminal part of the gene III protein

-38-

of phage M13 and two tandem stop codons. The carboxy-terminal part of gene III, which is fused to the Fd through a flexible linker, is located on a *Spe I/Nhe I* fragment. This fragment can be removed by cleavage with *Spe I/Nhe I*, followed by re-ligation which is possible because cleavage with the two enzymes generates identical cohesive ends. The leader peptides facilitate transport of the expressed light chain and Fd fragments to the periplasm, where the leader peptides are proteolytically cleaved and the free light chains and Fd fragments assemble into Fabs. The carboxyl-terminal half of gene III serves a capping role in the morphogenesis of filamentous phages. In the presence of the helper phage, one Fab-gene III fusion protein molecule along with 3-4 molecules of the native gene III protein are displayed on the phage surface. The helper phage is essential for replication and assembly of phage particles, because pComb3 is devoid of all these genes. The helper phage, VCSM13, used here for the rescue of the phage particles carries a kanamycin resistance gene that facilitates selection of bacteria infected with the helper virus. A recombination-deficient strain of *E. coli*, XL1-Blue, carrying a transposon 10 in its F' factor has been used to develop the phage display libraries. The F' factor is essential for the susceptibility of bacteria to the male-specific phages. Transposon 10 carries a tetracycline resistance gene.

#### ***Library Construction***

To clone the light chain PCR products in pComb3H vector, the PComb3H-SS plasmid was simultaneously treated with 5 units of *Sac I* and 9 units of *Xba I* for each microgram of DNA in a reaction mixture of appropriate volume containing the desired buffer. The reaction mixture was incubated for 3 hours at 37° C. The DNA was ethanol precipitated, pelleted, washed with 70% ethanol, air dried and suspended in 100 µl of Tris-EDTA (TE) buffer (pH 8.0). To isolate the linearized vector, the DNA was electrophoresed through 0.6% agarose gel. The gel containing a band of approximately 3.7 Kb DNA, visualized by ethidium bromide staining, was excised and the DNA was recovered from the agarose slice by electroelution. The recovered DNA was ethanol precipitated, pelleted, washed, dried and resuspended in TE buffer as before. Similarly,

-39-

the PCR products generated by using the light chain primers were treated with *Sac* I/*Xba* I, and the purified *Sac* I/*Xba* I fragments were electrophoresed through a 2% agarose gel. The 750 bp DNA band was excised, and the DNA fragments were recovered from the gel by electroelution, as described earlier. Multiple reactions were

5 set up to ligate the *Sac* I/*Xba* I linearized vector and the *Sac* I/*Xba* I digested PCR products. Ligation was performed for 1 hour at room temperature, using a commercially available ligation kit (Gibco BRL, Gaithersburg, MD). The ligation reactions were pooled and the DNA was ethanol precipitated, pelleted, washed, dried and resuspended in 15  $\mu$ l of water. Electroporation-competent XL-1Blue cells

10 (Stratagene, La Jolla, CA) were transformed with the ligated DNA by electroporation. Using an electroporator (BioRad, Hercules, CA), a pulse of 1700 volts at the field strength of 17 kV/cm was applied for 5 milliseconds. A series of transformations were performed and pooled together. After adding SOC medium (Gibco BRL), the transformation mix was incubated at 37° C for 1 hour. Subsequently, Super Broth

15 (Gibco BRL) containing 50  $\mu$ g/ml of carbenicillin and 10  $\mu$ g/ml of tetracyclin was added and the culture was incubated at 37° C on a shaker, overnight. The plasmid was isolated from the transformed cells, using a maxiprep kit (Qiagen, Valencia, CA). The isolated plasmid was linearized by digestion with 3 units of *Spe* I and 9 units of *Nco* I per  $\mu$ g of the DNA. A procedure similar to that described for preparing *Sac* I/*Xba* I

20 linearized vector was used to prepare *Nco* I/*Spe* I linearized plasmid. Similarly, the PCR products that were generated by using the heavy chain primers were digested with *Nco* I/*Spe* I and purified. The purified PCR products were inserted into the vector by ligation, and the ligation mixture was used to transform XL-1Blue cells, by electroporation. After adding tetracyclin- and carbenicillin-supplemented Super Broth

25 to the culture and incubating for 1 hour at 37° C, 1 ml of VCSM13 helper phage (Stratagene) containing approximately  $10^{12}$  pfus (plaque forming units) was added to the culture. After incubation for 2 hour, kanamycin (70  $\mu$ g/ml) was added and the culture was shaken overnight at 37° C. Next morning, cells were spun down (4,000 rpm, 15 minutes, 4° C) and the phage was precipitated from the supernatant by adding PEG-



-40-

8000 and NaCl to the final concentration of 4% and 3%, respectively, and incubating on ice for 30 minutes. The precipitate was collected by centrifugation (9,000 rpm, 20 minutes, 4° C). The pellet was suspended in 2 ml of Tris borate saline (TBS) containing 1% BSA. The phage was titered by infecting XL-1Blue cells ( $OD_{600} = 0.5$ ) with serial dilutions of phage suspension, and plating the infected cells on LB/carbenicillin plates.

## EXAMPLE 2

### Selection of TAG-72 -binding HuCC49V10 Variants and Production of Soluble Fabs

10 The phage library was screened and enriched for isolates binding to TAG-72. To that end, the library was subjected to multiple (7) rounds of panning. During each round, variants that specifically bind to TAG-72 were selected and amplified. The selected variants were used as a source of phagemids that were isolated and genetically manipulated *en mass* to express soluble Fab molecules.

15

#### *Panning*

For panning, a modification of the procedure that has been described earlier (Parmley and Smith *Gene* 73:305, 1988; Barbas *et al.*, *Proc. Natl. Acad. Sci. USA* 88: 7978, 1991) was used. During each round of panning, variants that specifically bind to TAG-72 were selected and amplified. ELISA plates (Nalgene Nunc International, Rochester, NY) were coated overnight at 4° C with 50  $\mu$ l of TAG-72 positive bovine submaxillary mucin (BSM) (Type 1-S; Sigma, St Louis, MO) in D-PBS with calcium and magnesium chloride (Gibco BRL). The amount of BSM was progressively reduced from 1.0  $\mu$ g to 0.01  $\mu$ g/well, with increasing rounds of panning. The wells were washed with water and blocked by incubating with milk blocking solution (KPL, Gaithersburg, MD) at 37° C for 1 hour. Fifty  $\mu$ l of phage ( $0.15 - 5 \times 10^{12}$  pfus) suspended in 50  $\mu$ l of milk diluent solution (KPL) was pre-incubated at room temperature for 30 minutes, before it was added to the wells and incubated at 4° C overnight. After removing the milk/phage solution, the wells were washed by pipetting TBS/0.5 % Tween 20

-41-

vigorously up and down. The washing cycles were progressively increased with increasing rounds of panning. Finally the phage was eluted by adding 50  $\mu$ l of elution buffer (0.1 M HCl, pH 2.2/BSA 1 mg/ml) and incubating for 10 minutes at room temperature. The eluate was removed and neutralized with 43  $\mu$ l of 1 M Tris base. The  
5 eluted phage was used to infect growing XL-1 Blue cells, at room temperature for 15 minutes, and the virus was replicated in the presence of helper phage VCSM13. Super Broth (SB) medium containing carbenicillin and tetracycline was added, and the culture was shaken at 37° C for 1 hour. Phage preparations and pannings were repeated, as described earlier. After the final round of panning, the virus was harvested, precipitated  
10 and re-suspended in TBS/1% BSA.

The stringent condition of panning (decreasing amounts of BSM on the plate and increasing number of washing cycles with the higher rounds of panning) reduced the titer of the eluted phage from  $1.2 \times 10^9$  in the first round to  $1.3 \times 10^6$  in the seventh round. The phage eluted from the seventh round was amplified to a titer of  
15 approximately  $2 \times 10^{13}$ . Thus, a significant enrichment of TAG-72 binding variants was achieved.

*Preparation of soluble Fab: genetic manipulation of phagemid for soluble Fab expression*

20 The phage eluted from the last round of panning was used to infect logarithmically growing XL-1Blue cells. The culture was grown in SB medium containing carbenicillin (20  $\mu$ g/ml) and tetracycline (10  $\mu$ g/ml), overnight at 37° C. Cells were collected by pelleting and phagemid DNA was isolated. The DNA was digested by treatment with *Nhe I*/*Spe I* to remove DNA fragment that encodes gene III.  
25 The enzyme treated DNA was electrophoresed on a 0.6 % agarose gel. The large DNA fragment was gel purified, self-ligated and used to transform competent XL-1Blue cells. Transformation mixture was streaked on LB/carbenicillin plates. After incubating the plates o/n at 37° C, fifty individual colonies were inoculated in 10 ml of SB medium containing 20 mM MgCl<sub>2</sub> and 50  $\mu$ g/ml carbenicillin. Cultures were grown at 37° C for

-42-

6 hours, before isopropyl- $\beta$ -D thiogalactopyranoside (IPTG) was added to a final concentration of 1 mM for the induction of the Fab expression. The culture was then shifted to 30° C and shaken overnight. Cells were recovered by centrifugation. A part of the cell pellet was saved to isolate the phagemid for the subsequent sequence analysis  
5 of the variants. The rest of the cell pellet was resuspended in 1 ml of PBS and lysed by four cycles of freezing in a dry ice-ethanol bath for 5 minutes and thawing in a 37° C water bath. The cell debris was pelleted by centrifugation at 15,000 rpm, and the supernatant was collected for the Fab assay.

10

**EXAMPLE 3****Screening for High-Binding-Affinity Variants of HuCC49V10**

Cell lysates from all 48 cultures of the XL-1Blue cells transformed by the Fab constructs of pComb3H lacking the gene III fragment were tested for the presence of Fab by ELISA and Western Blot analysis. The cell lysates that were found positive  
15 were then screened for binding to the TAG-72 positive BSM by Surface Plasmon Resonance (SPR).

*ELISA*

Supernatants from each of the 48 cell lysates were screened to detect Fab by  
20 ELISA assay that has earlier been described (Tamura *et al.*, *J. Immunol.*164:1432, 2000; Bei *et al.*, *J. Immunol. Methods*186: 245, 1995). Individual wells of the 96-well polyvinyl microtiter plates were coated with 0.1  $\mu$ g (50  $\mu$ l) of goat anti-human kappa (Southern Biotechnology Associate, Inc., Bringham, AL). The plates were blocked with 5% BSA in PBS for 1 hour at 37° C and then washed with 1% BSA in PBS. Fifty  
25  $\mu$ l of the supernatant to be tested was loaded in each well. After a 1 hour incubation at 37° C, plates were washed with 1% BSA in PBS. This was followed by adding 100  $\mu$ l of 1:5,000 dilution (in 1% BSA in PBS) of peroxidase-conjugated goat anti-human IgG (Fab)<sub>2</sub> fragment specific antibody (Jackson Immuno Research Lab, West Grove, PA). The plates were incubated for another hour at 37°C. They were washed prior to the

-43-

addition of 100  $\mu$ l of freshly prepared substrate ( $H_2O_2$ ) mixed with o-phenylene diamine hydrochloride as a chromogen (Sigma, St. Louis, MO). The colorimetric reaction was allowed to proceed for 10 min at room temperature in the dark, before it was terminated by the addition of 50  $\mu$ l of 4N  $H_2SO_4$  per well. The absorbance was read at 490 nm.

5           Of the 48 lysates that were tested in duplicate, a great majority of them were positive, and many among them were strongly positive for the Fab.

#### *Western Blot Analysis*

The presence of soluble Fab in cell lysates was also tested by Western Blot.

10          Forty  $\mu$ l of the supernatant from each of the 48 cell lysates was electrophoresed on a 4-20% pre-cast SDS-polyacrylamide gel. Two sets of SDS-PAGE were carried out, one under reducing and the other under non-reducing conditions. The proteins were electroblotted on to the Immobilon-P membrane (Millipore, Bedford, MA) according to the instructions of the manufacturer. The blotted membrane was saturated with 5% milk for  
15          1 hour, washed, dried and then probed with peroxidase-conjugated goat anti-human IgG (Fab)<sub>2</sub> fragment specific antibody (Jackson ImmunoResearch Lab, West Grove, PA). The membrane was washed several times with TBS/0.05% Tween 20, before ECL Western blotting detection kit (Amersham Pharmacia Biotech UK Limited, Buckinghamshire, UK) was used to detect the protein band.

20          Western blots that were done after electrophoresis under non-reducing conditions showed a band of approximately 55 kD, a size in conformity with that of a Fab molecule. Similarly, Western blotting done following SDS-PAGE under reducing conditions yielded a band of 27-28 kD, a size expected of the Fd fragment. The Fab could be detected in 47 of the 48 cell lysates that were tested, albeit the degree of the  
25          intensity of the band varied.

#### *Screening of Fabs for Their TAG-72 Binding Affinity by SPR*

The expressed Fab molecules were screened for their immunoreactivity to the TAG-72 positive BSM, using BIAcore X instrument (Biacore, Piscataway, NJ) for SPR

-44-

measurements. All samples were run in duplicate over a sensor chip immobilized with 500 Resonance Units (RU) of BSM. Another sensor chip immobilized with 500 RU of BSA was used as a reference. Proteins were immobilized on carboxymethylated dextran CM5 chips (Biacore) by amine coupling using standard procedures (Johnsson *et al.*, *Anal. Biochem.*, 198: 268, 1991; Schuck *et al.*, 1999 Measuring protein interactions by optical biosensors. In: J.E. Coligan, B.M. Dunn, H.L. Ploegh, D.W. Speicher, and P.T. Wingfield (Eds.) Current Protocols in Protein Science. John Wiley & Sons, New York, Vol. 2, p. 20.2.1.) One hundred  $\mu$ l of each sample was applied at a flow rate of 20  $\mu$ l/min and the dissociation was observed for 300 seconds. After the samples were washed with the running buffer, the surfaces were regenerated with 1 M CAPS buffer. The BIAeval 3.0.2 program was used to analyze the data. The BSA sensorgram was subtracted from the corresponding BSM sensorgram and the Langmuir dissociation model was used to evaluate the off rate ( $k_{off}$ ).

Supernatants from all 48 cell lysates were analyzed for their reactivity to BSM. Since the Fabs were not purified, they were evaluated for their dissociation rates only. Fabs derived from the murine CC49, HuCC49V10 and human IgG (HuIgG) were included as controls. The dissociation rates of only 6 isolates were lower than that of HuCC49V10 (Table 5). They were characterized further, because these isolates are likely to have higher affinity for TAG-72.

20

**TABLE 5** Dissociation rates of Fabs by Surface Plasmon Resonance

|    | <u>Isolate</u> | <u><math>K_{off}</math> (1/s)</u> |
|----|----------------|-----------------------------------|
|    | HuCC49V10-12   | $2.20 \times 10^{-4}$             |
|    | HuCC49V10-7    | $2.58 \times 10^{-4}$             |
| 25 | HuCC49V10-14   | $9.14 \times 10^{-4}$             |
|    | HuCC49V10-15   | $1.21 \times 10^{-4}$             |
|    | HuCC49V10-10   | $2.50 \times 10^{-3}$             |
|    | HuCC49V10-13   | $4.34 \times 10^{-4}$             |
|    | mCC49          | $1.04 \times 10^{-4}$             |
| 30 | HuCC49V10      | $1.07 \times 10^{-3}$             |
|    | HuIgG          | $1.38 \times 10^{-2}$             |

-45-

The phagemids prepared from the cell pellets of the six isolates were used for the sequencing of the inserts encoding the variable regions of the light and heavy chain. DNA sequencing was carried out by the method of dideoxy-mediated chain termination. Amino acid sequences deduced from the nucleotide sequences showed substitutions in LCDR3 of all the six variants. These substitutions were limited to the positions 91, 93 and 94. Whereas, only one variant showed substitutions in HCDR2 (positions 52 and 58). Two variants showed inadvertent mutation in position 27b of the LCDR1 (Table 2).

10

**EXAMPLE 4****Expression of HuCC49V10 Variants in Insect Cells; Purification and Characterization of the Expressed antibodies**

For further characterization of the variants, they were expressed in insect cells as whole antibodies, rather than as Fab fragments. To that end, expression constructs of the genes encoding the heavy and light chains of the variants were made in vectors containing promoters that are functional in insect cells. The variant antibodies were purified and studied for their relative antigen-binding affinity and their ability to bind to a cell surface antigen.

15

*Expression Constructs of the Heavy and Light Chain Genes of the Variant Antibodies*

20

Two different vectors, pIZ/V5-His (Figure 3A) and pIB/V5-His (Figure 3B) (Invitrogen, Carlsbad, CA), carry the baculovirus immediate early promoter OpIE2 that drives the expression of heterologous proteins in *lepidopteran* insect cells, without requiring viral factors for its activation. A multiple cloning site located downstream from the promoter, in both vectors, facilitates cloning of the gene of interest to be expressed constitutively. A polyadenylation sequence placed immediately 3' to the multiple cloning site ensures efficient transcription termination and polyadenylation of mRNA. One vector, pIZ/V5-His, carries the Zeocin resistance gene, while the other, pIB/V5-His, carries the blasticidin resistance gene. These genes are used for selecting stable transfectants of the insect cell line.

25

-46-

The sequences encoding the light chain of the variants were assembled in the pIZ/V5-His vector. A series of genetic manipulations were required to provide a leader sequence for each of the genes encoding the light chain. Essentially, a 538 bp *BsmA I/Blp I* DNA fragment carrying the LCDR3 and/or LCDR1 mutation(s) and extending  
5 into the constant region was PCR amplified from each of the variants. This DNA fragment replaced the corresponding sequence from a pBluescript construct of the variant HuCC49V10-5, which carried the light chain gene of HuCC49V10 along with its leader sequence. The construct was digested with *Sma I*, for which a unique site was located immediately 3' to the insert, an *Xba I* linker was ligated to the DNA ends, and  
10 the insert was lifted as a *Hind III/Xba I* fragment of approximately 1 Kb. The insert was cloned downstream from the OpIE2 promoter at the *Hind III/Xba I* site.

The heavy chain expression constructs were made in the pIB/V5-His vector. Since only one (variant HuCC49V10-13) of the six variants showed any mutations in the HCDR2, the heavy chain construct of the variant HuCC49V10-8, which carried the  
15 heavy chain gene of the HuCC49V10 along with its leader sequence, was paired with the light chain constructs of the variants (variants HuCC49V10-7, HuCC49V10-10, HuCC49V10-12, HuCC49V10-14 and HuCC49V10-15) for the production of the variant antibodies. The gene encoding the heavy chain along with its leader was excised from the pBSc construct of the variant HuCC49V10-8 as a *Hind III/Xho I*  
20 fragment. The insert was cloned at the *Hind III/Xho I* site, downstream of the OpIE2 promoter in pIB/V5-His vector.

Construction of the expression vector containing the heavy chain of variant HuCC49V10-13 in the pIB/V5-His vector, while incorporating the eukaryotic leader sequence between the promoter and the gene, required some genetic manipulation.  
25 Essentially, an 85 bp *Bcl I/Sca I* fragment of variant HuCC49V10-8 was replaced with the corresponding DNA fragment of variant HuCC49V10-13 that carried the mutations in HCDR2. The manipulated insert was lifted from the construct as a *Hind III/Xho I* fragment and cloned in pIB/V5-His vector, downstream from the promoter.

-47-

*Production of the Variant Antibodies and Their Immunoreactivity*

To develop transfectomas secreting the HuCC49 variants, serum-free-adapted Sf9 insect cells (Gibco BRL) were used. Two million insect cells plated in each well of a 6-well plate were co-transfected with 10 µg each of the pIZ/V5-His-light chain and pIB/V5-His-heavy chain constructs, using Insectin-Plus Liposomes (Invitrogen) to mediate the transfections. After four days, the culture supernatants were harvested and tested, by ELISA, for Ig secretion and the reactivity of the secreted antibody to TAG-72. For isolating stable transfectants, selection medium containing 200 µg/ml of zeocin and 50 µg/ml of blasticidin was used. For ELISA assays, four-day harvests of culture supernatants were collected and frozen at -20° C, prior to use.

The ELISA assay for monitoring Ig production was carried out by a procedure described earlier (Example 3). To test the reactivity of the secreted antibody to TAG-72, 1 µg/well of BSM was coated on the individual wells of the 96-well polyvinyl microtiter plates. After saturation of the plates for 1 hour at 37°C with milk blocking solution (KPL), 50 µl of diluted culture supernatants were added to the wells, in duplicate, followed by incubation at 37°C for 1 hour. After a cycle of washings with the washing solution (KPL), 100 µl of peroxidase-conjugated anti-human IgG (Fcγ-fragment specific), diluted 1:3000 in milk diluent solution (KPL), was added to the plates and the incubation continued for an additional hour at 37°C. They were washed prior to the addition of 100 µl of TMB peroxidase substrate (KPL). The colorimetric reaction proceeded for 10 minutes at room temperature, before the addition of the stop solution (KPL). The absorbance was read at 450 nm.

Results of the ELISA of the culture supernatants for IgG showed that all the variants produced antibody. When the culture supernatants were assayed for their reactivity to TAG-72, it became evident that the antibodies produced by the variants were specific to TAG-72. When the ELISA was carried out using serially diluted supernatants, the results of the assay suggested that the antigen-binding reactivity of, at least two variant antibodies, HuCC49V10-14 and HuCC49V10-15, was either comparable to or exceeded that of the parental HuCC49V10, while the reactivity of



-48-

variant HuCC49V10-13 was convincingly lower than that of HuCC49V10. Variant HuCC49V10-13 was not included in further studies.

*Purification of the Variant Antibodies and Their SDS-PAGE Analysis*

5           The supernatants collected from the cultures of the transfectomas producing the variant antibodies were centrifuged at 2,000 x g for 10 minutes to remove cellular debris and loaded on a protein G agarose column (Gibco BRL). 0.1 M glycine hydrochloride pH 2.5 was used to elute the proteins bound to the column. The pH of the eluted material was immediately adjusted to 7.4 with 1.0 M Tris pH 8.0. The  
10 proteins were concentrated using a Centricon 30 (Amicon, Beverly, MA) and dialyzed in PBS buffer using Slide-A-Lyzer cassette (Pierce, Rockford, IL). The protein concentration was determined by the method of Lowry (Lowry *et al.*, *J. Biol. Chem.* 193: 265,1951). The concentration of the variant antibodies ranged between 2-5  
15  $\mu\text{g/ml}$  of the culture supernatant. The purity of the eluted proteins was evaluated by SDS-PAGE, under reducing and non-reducing condition, using pre-cast 4-20% Tris-glycine gel (Novex, San Diego, CA) and Coomassie blue staining (Novex) visualization. Under non-reducing conditions (Figure 4A) a protein band of approximately 160 kD was seen, while the reducing condition (Figure 4B) yielded two protein bands of approximately 50-55 kD and approximately 25-28 kD, the sizes  
20 expected of the heavy and light chains of an IgG molecule.

*Competition radioimmunoassay (RIA)*

          The relative antigen-binding affinity of the variant antibodies was determined using competition RIA, as described earlier (Iwahashi *et al.*, *Mol. Immunol.* 36:1079,  
25 1999; Tamura *et al.*, *J. Immunol.* 164: 1432, 2000). Murine CC49, HuCC49 and HuIgG were included in the assay as positive and negative controls. Twenty five  $\mu\text{l}$  of serial dilutions of the antibodies, re-suspended in 1% BSA in PBS, were added to microtiter plates containing 10 ng of BSM saturated with 5% BSA in PBS.  $^{125}\text{I}$ -labeled HuCC49 (100,000 cpm in 25  $\mu\text{l}$  of 1% BSA in PBS) was then added to each well. The assay was

-49-

set up in triplicate. After an overnight incubation at 4°C, the plates were washed and counted in a  $\gamma$ -scintillation counter.

The results of the competition assay (Figure 5) show that all the antibodies, except the HuIgG control, were able to completely inhibit the binding of  $^{125}\text{I}$ -labeled HuCC49 to BSM. The competition profiles of the variants HuCC49V10-7 and HuCC49V10-12 were shifted to the right, while the profile of HuCC49V10-14 was shifted only slightly and that of HuCC49V10-15 considerably to the left of the competition profile of the parental antibody HuCC49V10. Competition profiles, shown in Figure 5, were used to calculate the amount of each unlabeled competitor required for 50% inhibition of the binding of  $^{125}\text{I}$ -labeled HuCC49 to BSM (Table 6). Compared to 150 ng of HuCC49V10, 220 ng and 350 ng of variants HuCC49V10-7 and HuCC49V10-12, respectively, were needed. In contrast, 92 ng of HuCC49V10-14 and only 58 ng of HuCC49V10-15 were required for 50% inhibition of the binding of  $^{125}\text{I}$ -labeled HuCC49 to BSM. Thus, HuCC49V10-15 is approximately 3-fold better than that of HuCC49V10 antigen binding. The relative affinity constants ( $K_a$ ) were calculated, from a range of competition experiments, using a modification of the Scatchard methods (Frankel and Gerhard, *Gene* 16:101,1979). The  $K_a$  values for HuCC49V10-14 were only comparable, while those for HuCC49V10-15 were approximately 50% higher than that of HuCC49V10.

20

**TABLE 6**  
**Relative affinity binding of CC49 antibodies**

|    | <u>CC49 antibody</u> | <u>Amount needed for 50% inhibition of the binding of <math>^{125}\text{I}</math>-labeled HuCC49 to BSM (ng)</u> |
|----|----------------------|--|
| 25 | mCC49:               | 25   |
|    | HuCC49:              | 78   |
|    | HuCC49V10:           | 150  |
|    | HuCC49V10-7:         | 220  |
|    | HuCC49V10-12:        | 350  |
| 30 | HuCC49V10-14:        | 92   |
|    | HuCC49V10-15:        | 58   |

-50-

*Flow cytometric analysis*

Flow cytometric analysis was used to measure the binding of the HuCC49V10 variants to the TAG-72 expressed on the cell surface of a T cell line, Jurkat. The procedure for FACS analysis has been described (Guadagni *et al.*, *Cancer Res.* 50:6248, 1990). In addition to the isotype matched antibody, HuIgG, used as a negative control, HuCC49 and chimeric CC49 were included as positive controls. To evaluate the ability of the variants to bind to cell-surface TAG-72,  $1 \times 10^6$  Jurkat cells were resuspended in cold  $\text{Ca}^{++}$  and  $\text{Mg}^{++}$  free Dulbecco's PBS and incubated with the antibody to be tested for 30 minutes on ice. After one washing cycle, the cell suspension was stained with FITC-conjugated mouse anti-human antibody (Pharmingen) for 30 minutes on ice. A second washing cycle was performed before the samples were analyzed with a FACScan (Becton Dickinson, Mountain View, CA) using CellQuest for Macintosh. Data from the analysis of 10,000 cells were obtained.

Different concentrations of antibodies were used to compare their binding to the Jurkat cells expressing cell surface TAG-72. When 1.0  $\mu\text{g}$  of each antibody was used, the percentage of gated cells, calculated after exclusion of irrelevant binding, was 27.8 for HuCC49V10, while for the variants HuCC49V10-14 and HuCC49V10-15, it was 43.7 and 68.1, respectively. Thus, the two variants show significantly better binding to the cells displaying TAG-72 on their surface. In contrast, the binding of the variants HuCC49V10-7 and HuCC49V10-12 was comparable to that of the parental HuCC49V10 (Figure 6).

**EXAMPLE 5****Sera Reactivity of HuCC49V10 Variants**

To assess the potential immunogenicity of the HuCC49V10 variants in patients, the variants were tested for their reactivity to sera stored from the adenocarcinoma patients in a phase I clinical trial (Mulligan *et al.*, *Clin. Cancer Res.* 1: 1447, 1995). Patients in this clinical trial were administered  $^{177}\text{Lu}$ -labeled murine CC49 and were

-51-

found to have anti variable region, including anti-idiotypic, antibodies to CC49 (Iwahashi *et al.*, *Mol. Immunol.* 36: 1079, 1999; Tamura *et al.*, *J. Immunol.* 164: 1432, 2000). Sera reactivity was determined by a highly sensitive Surface Plasmon Resonance (SPR)-based competition assay. This assay involves the use of a device  
5 (BIAcore X instrument) that monitors binding of the sera anti-idiotypic (or anti variable region) antibodies to HuCC49, and the inhibition of this binding by the variants. IC<sub>50</sub>, the concentration of the competitor antibody required for 50% inhibition of the binding of the HuCC49 to the patient's serum was calculated by plotting the percent inhibition as a function of the competitor concentration. A higher IC<sub>50</sub> indicates a decreased  
10 reactivity to the serum suggesting potentially reduced immunogenicity of the competitor antibody (HuCC49 variant) in patients.

#### *Immunoabsorption of Patients Sera*

Sera from patient EA and DS from the phase I clinical trial were used to  
15 compare the reactivity of the variants HuCC49V10-14 and HuCC49V10-15 to that of the parental HuCC49V10. The sera, however, contain circulating TAG-72 antigen and anti-murine Fc antibodies that might interfere with the binding of the HuCC49 and its variants to the sera anti-idiotypic (anti variable) antibodies. To overcome this difficulty, TAG-72 and antibodies to murine Fc were removed from the sera by immunoabsorption  
20 prior to checking the sera reactivity. The procedure for immunoabsorption has been described (Iwahashi *et al.*, *Mol. Immunol.* 36: 1079, 1999; Tamura *et al.*, *J. Immunol.* 164: 1432, 2000). Essentially, a murine antibody, CC92, which reacts with an epitope of TAG-72 distinct from the one recognized by CC49 (Kuroki *et al.*, *Cancer Res.* 50: 4872, 1990) was coupled to Reactigel (HW65F; Pierce, Rockford, IL) (Hearn *et al.*, *J.*  
25 *Chromatogr.* 185: 463, 1979). Serum was added to an equivalent volume of the CC92 gel (wet-packed volume) and incubated overnight at 4° C with end-over-end rotation. The samples were centrifuged at 1,000 x g for 5 minutes and the supernatant was saved and stored.

-52-

*SPR- Based Competition Assay*

To test the sera reactivities of antibodies, SPR measurements were done with the BIAcore X instrument (described in Example 3) using carboxymethylated dextran chips CM5 (BIAcore, Piscataway, NJ). Proteins were immobilized on the CM5 chips by amine coupling (Johnsson et al., *Anal. Biochem.* 198: 268, 1991). The dextran layer of the sensor chip was activated by injecting 35  $\mu$ l of a mixture of *N*-ethyl-*N*'-(3 dimethylaminopropyl)carbodiimide hydrochloride and *N*-hydroxysuccinimide at a flow rate of 5  $\mu$ l/min. Proteins diluted in 10 mM sodium acetate buffer (pH 5.0) at a concentration of 100  $\mu$ g/ml were then injected until surfaces of 5000 resonance units (RUs) were obtained. The remaining reactive groups on the surfaces were blocked by injecting 35  $\mu$ l of 1 M ethanolamine (pH 8.5).

To compare the sera reactivity of HuCC49, HuCC49V10 and its variants HuCC49V10-14 and HuCC49V10-15, competition experiments were done at 25° C on a sensor chip containing HuCC49 in flow cell 1 and rabbit gamma globulin (BioRad, Hercules, CA) in flow cell 2 as a reference. A recently developed sample application technique was used (Abrantes et al., *Anal. Chem.* 73: 2828, 2001), in which the microfluidics control of the instrument was replaced by an externally installed computer-controlled syringe pump with stepping motor (model 402 from Gilson Inc., Middleton, WI). A tubing was inserted into the open port of the connector block in order to serve as an inlet port through which the sample can be aspirated, and the port previously designated as running buffer inlet was connected to the syringe pump (Abrantes et al., *Anal. Chem.* 73: 2828, 2001). The computer-controlled aspiration made it possible to use small sample volumes. Typically, the microfluidics system was rinsed and filled with running buffer (10 mM HEPES (pH 7.4), 150 mM NaCl, 3 mM EDTA and 0.005% Tween 20). This was followed by sequential aspiration of 2  $\mu$ l of air, 0.3  $\mu$ l of sample (preadsorbed serum  $\pm$  antibodies as competitors), 2  $\mu$ l of air, 5-6  $\mu$ l of sample, 2  $\mu$ l of air, 0.3  $\mu$ l of sample, and 2  $\mu$ l of air into the inlet tubing at a rate of 20  $\mu$ l/min. The sample was centered across the sensor surface and an oscillatory flow was applied at a rate of 20  $\mu$ l/min. This flow ensures efficient mass transfer of the

-53-

sample to the surface and allows for a very long contact time without net displacement of the sample. The binding was measured for 1000 seconds. After the unbound samples were removed from the surfaces by washing with running buffer using a flow rate of 100  $\mu$ l /min, the surfaces were regenerated with a one-minute injection of 10 mM glycine (pH 2.0). The percent binding at each antibody concentration was calculated as follows: % binding = [slope of the signal obtained with competitor (serum + antibody) / slope of the signal obtained without competitor (serum only)] x 100.

Figure 7 shows the competition profiles generated by HuCC49 and different variants when they were used to compete with the HuCC49 immobilized on the sensor chip for binding to the anti-idiotypic (anti variable) antibodies to CC49 present in the sera of the patients EA and DS. For serum from patient DS, approximately one micromole of the variant HuCC49V10 is required for 50% inhibition of the binding of HuCC49 to the serum, while the variants HuCC49V10-14 and HuCC49V10-15 do not show any significant inhibition at this concentration. For serum from patient EA, approximately 20 nanomoles of the HuCC49V10 is needed for 50% inhibition of the binding of HuCC49 to the serum, whereas one micromole of each of the HuCC49V10-14 and HuCC49V10-15 variants cause less than 40% inhibition. Thus, the two mutants showed not only significantly higher antigen binding affinity than that of HuCC49V10, but they also showed much lower reactivity to sera from patients who showed an anti-idiotypic response to the parental CC49 antibody.

The improved affinity and the minimal sera reactivity of the variants HuCC49V10-14 and HuCC49V10-15 make them potentially much better clinical reagents than the variant HuCC49V10.

25

## EXAMPLE 6

### HuCC49V10-14 and HuCC46V10-15 Testing in Patients

#### Patients and Sample Collection

Patients with recurrent metastatic adenocarcinoma are assessed to determine the maximum tolerated dose of intravenously administered  $^{177}$ Lutetium radiolabeled

-54-

HuCC49V10-14 and <sup>177</sup>Lutetium radiolabeled HuCC49V10-15 (Mulligan, (1995) *Clin. Cancer Res.* 1:1447-1454). Adenocarcinoma patients are given a test dose of 0.1 mg (intravenous bolus) of HuCC49V10-14 or HuCC49V10-15 and are observed for 30 minutes prior to administration of the <sup>177</sup>Lu-labeled HuCC49V10-14 or <sup>177</sup>Lu-labeled HuCC49V10-15. The radiolabeled antibodies are given as an intravenous infusion over the course of a one hour time interval. Blood samples are collected prior to and at the end of the infusion, as well as 0.5, 1 and 2 hours following the completion of the infusion. In addition, blood samples are collected daily over the subsequent 7 days. Patients return for a follow-up examination at 3, 6 or 8 weeks. Blood samples are again collected during these visits. Sera are separated and stored at -20°C.

#### Determination of Patient Humoral Response

The sera from the patients are evaluated for the presence of human anti-murine antibodies (HAMA) in response to radiolabeled HuCC49V10-14 or HuCC49V10-15 using the SPR-based assay described in Example 5, above. The sera is pre-absorbed with a CC92 monoclonal antibody that recognizes an epitope of TAG-72 which is different from the epitope recognized by the humanized CC49 monoclonal antibody. Pre-absorption using the CC92 antibody removes circulating TAG-72 from the sera. To monitor the sera-reactivity of the anti-variable antibodies in the pre-absorbed sera, HuCC49V10-14 or HuCC49V10-15 is coated on the surface of flow cell 1 and a reference protein (HuIgG1, bovine serum albumin, or rabbit gamma globulin) is immobilized on the surface of flow cell 2. A small, known volume of a patient serum sample is applied to each flow cell using the recently developed sample application technique described in Example 5 (Abrantes *et al.*, *Anal. Chem.* 73:2828, 2001). Sensograms to flow cell 1 and flow cell 2 are generated and the response difference between the two cells is plotted for each serum sample, thus providing a measure of the anti-variable region response against HuCC49V10-14 or HuCC49V10-15 in each particular serum sample. Results indicate that the patients' sera have a minimal anti-variable region response against the HuCC49V10-14 and HuCC49V10-15 antibodies.

-55-

This disclosure provides humanized CC49 monoclonal antibodies. The disclosure further provides methods of diagnosing and treating tumors using these humanized CC49 antibodies. It will be apparent that the precise details of the methods described may be varied or modified without departing from the spirit of the described  
5 invention. We claim all such modifications and variations that fall within the scope and spirit of the claims below.



-56-

**CLAIMS**

We claim:

5

1. A humanized CC49 antibody, comprising a non-conservative amino acid substitution in a light chain complementarity determining region 3 of the CC49 antibody, or functional fragment of the humanized CC49 antibody, that has a high binding affinity for TAG-72.

10

2. The antibody of claim 1, wherein the non-conservative substitution is a tyrosine to proline substitution.

15

3. The antibody of claim 1, wherein the non-conservative substitution is at position 91.

4. The antibody of claim 1, wherein the non-conservative substitution is at a residue that is a ligand contact residue.

20

5. The antibody of claim 1, wherein the functional fragment is an Fab fragment, an Fv fragment, or an F(ab')<sub>2</sub> fragment.

25

6. The antibody of claim 1, wherein a light chain complementarity determining region 1 and a light chain complementarity determining region 2 are from a human antibody.

7. The antibody of claim 1, wherein the light chain complementarity determining region 3, a heavy chain complementarity determining region 1, a heavy chain

-57-

complementarity determining region 2, and a heavy chain complementarity determining region 3 are from a murine CC49 antibody.

8. The antibody of claim 1, wherein the high binding affinity is at least about  $1.2 \times 10^{-8}$  M.  
5
9. The antibody of claim 8, wherein the high binding affinity is at least about  $1.5 \times 10^{-8}$ , about  $2.0 \times 10^{-8}$ , about  $2.5 \times 10^{-8}$ , about  $3.0 \times 10^{-8}$ , about  $3.5 \times 10^{-8}$ , about  $4.0 \times 10^{-8}$ , about  $4.5 \times 10^{-8}$ , or about  $5.0 \times 10^{-8}$  M.  
10
10. The antibody of claim 1, wherein the antibody is minimally immunogenic.
11. The antibody of claim 1, wherein the antibody further comprises an effector molecule.  
15
12. The antibody of claim 11, wherein the effector molecule is a detectable label.
13. The antibody of claim 12, wherein the detectable label comprises a radioactive isotope, an enzyme substrate, a co-factor, a ligand, a chemiluminescent agent, a  
20 fluorescent agent, a hapten, or an enzyme.
14. The antibody of claim 11, wherein the effector molecule is a toxin.
15. The antibody of claim 14, wherein the toxin is a chemotherapeutic drug, a  
25 radioactive isotope, a bacterial toxin, a viral toxin, a cytokine or a venom protein.
16. The antibody of claim 1, further comprising at least one additional non-conservative amino acid substitution in a light chain complementarity determining region.

-58-

17. The antibody of claim 16, wherein the light chain complementarity determining region is a light chain complementarity determining region 1, a light chain complementarity determining region 2, or a light chain complementarity determining region 3.
18. The antibody of claim 1, further comprising at least one non-conservative amino acid substitution in a heavy chain complementarity determining region.
19. The antibody of claim 18, wherein the heavy chain complementarity determining region is a heavy chain complementarity determining region 1, a heavy chain complementarity determining region 2, or a heavy chain complementarity determining region 3.
20. A humanized CC49 antibody, wherein a nucleic acid sequence encoding the antibody has an ATCC Accession number comprising ATCC Accession number PTA-4182 or ATCC Accession number PTA-4183.
21. A nucleic acid molecule encoding the humanized monoclonal antibody of claim 1.
22. A vector comprising the nucleic acid of claim 21.
23. A humanized CC49 antibody, comprising:
- a variable light framework region and a variable heavy framework region of a human antibody;
  - a complementarity determining region, wherein at least one complementarity determining region is from the human antibody and the remaining complementarity determining regions are from a murine CC49 antibody;

-59-

a non-conservative substitution of a first residue in a light chain complementarity determining region 3; and

a substitution of a second residue in a complementarity determining region of the human CC49 antibody;

5 wherein the humanized CC49 antibody has a high binding affinity for TAG-72 and is minimally immunogenic.

24. The antibody of claim 23, wherein the non-conservative substitution is a tyrosine to proline substitution.

10

25. The antibody of claim 23, wherein the non-conservative substitution is at position 91.

26. The antibody of claim 25, wherein the non-conservative substitution at position 15 91 is a tyrosine to proline substitution.

27. The antibody of claim 23, wherein the antibody further comprises an effector molecule.

20 28. The antibody of claim 27, wherein the effector molecule is a detectable label.

29. The antibody of claim 28, wherein the detectable label comprises a radioactive isotope, an enzyme substrate, a co-factor, a ligand, a chemiluminescent agent, a fluorescent agent, a hapten, or an enzyme.

25

30. The antibody of claim 27, wherein the effector molecule is a toxin.

31. The antibody of claim 30, wherein the toxin is a chemotherapeutic drug, a radioactive isotope, a bacterial toxin, a viral toxin, a cytokine or a venom protein.

-60-

32. A method of detecting a TAG-72-expressing tumor in a subject, comprising:  
contacting a sample obtained from the subject with the antibody of claim  
1 for a sufficient amount of time to form an immune complex;  
5 detecting the presence of the immune complex, wherein the presence of  
the immune complex demonstrates the presence of the TAG-72-expressing tumor.
33. The method of claim 32, wherein the tumor is a colorectal tumor, a gastric  
tumor, a pancreatic tumor, a breast tumor, a lung tumor, an adenocarcinoma, or an  
10 ovarian tumor.
34. The method of claim 32, wherein the antibody further comprises an effector  
molecule.
- 15 35. The method of claim 34, wherein the effector molecule is a detectable label.
36. The method of claim 35, wherein the detectable label comprises a radioactive  
isotope, an enzyme substrate, a co-factor, a ligand, a chemiluminescent agent, a  
fluorescent agent, a hapten, or an enzyme.  
20
37. The method of claim 32, further comprising contacting the antibody with a  
secondary antibody.
38. The method of claim 37, wherein the secondary antibody further comprises a  
25 detectable label.
39. A method of detecting a TAG-72-expressing tumor in a subject, comprising:  
administering the antibody of claim 1 to the subject for a sufficient  
amount of time to form an immune complex;

-61-

detecting the presence of the immune complex, wherein the presence of the immune complex demonstrates the presence of the TAG-72-expressing tumor.

40. The method of claim 39, wherein the antibody further comprises an effector  
5 molecule.
41. The method of claim 40, wherein the effector molecule is a detectable label.
42. The method of claim 41, wherein the detectable label comprises a radioactive  
10 isotope, an enzyme substrate, a co-factor, a ligand, a chemiluminescent agent, a fluorescent agent, a hapten, or an enzyme.
43. The method of claim 39, wherein the tumor is a colorectal tumor, a gastric  
15 tumor, a pancreatic tumor, a breast tumor, a lung tumor, an adenocarcinoma, or an ovarian tumor.
44. A method of treating a subject having a tumor that expresses TAG-72,  
comprising administering to the subject a therapeutically effective amount of the  
antibody of claim 1, wherein administering the therapeutically effective amount of the  
20 antibody of claim 1 inhibits the growth of the tumor or reduces the size of the tumor, thereby treating the subject.
45. The method of claim 44, wherein the administration of a therapeutically  
effective amount of the antibody of claim 1 does not elicit a human anti-murine  
25 antibody response in a subject.
46. The method of claim 44, wherein the tumor is a colorectal tumor, a gastric  
tumor, a pancreatic tumor, a breast tumor, a lung tumor, an adenocarcinoma, or an  
ovarian tumor.

-62-

47. The method of claim 44, wherein the antibody further comprises an effector molecule.
- 5 48. The method of claim 47, wherein the effector molecule is a toxin.
49. The method of claim 48, wherein the toxin is a chemotherapeutic drug, a radioactive isotope, a bacterial toxin, a viral toxin, a cytokine, or a venom protein.
- 10 50. The method of claim 49, wherein the antibody comprising a radioactive isotope is used in radioimmunotherapy.
51. A method of treating a subject having a tumor that expresses TAG-72, comprising:
- 15 administering the antibody of claim 1 to the subject for a sufficient amount of time to form an immune complex, wherein the antibody comprises a radioactive isotope;
- detecting the presence of the immune complex with a hand-held gamma counter, wherein the presence of the immune complex demonstrates the presence of the
- 20 TAG-72-expressing tumor; and
- removing the tumor surgically, thereby treating the subject.
52. A pharmaceutical composition comprising a therapeutically effective amount of the antibody of claim 1 in a pharmaceutically acceptable carrier.
- 25 53. A kit, comprising a container comprising the antibody of claim 1.

-63-

54. The kit of claim 53, further comprising a container containing an antigen, a container containing a secondary antibody conjugated to a chemical compound, instructions for using the kit, or any combination thereof.



**FIG. 1**

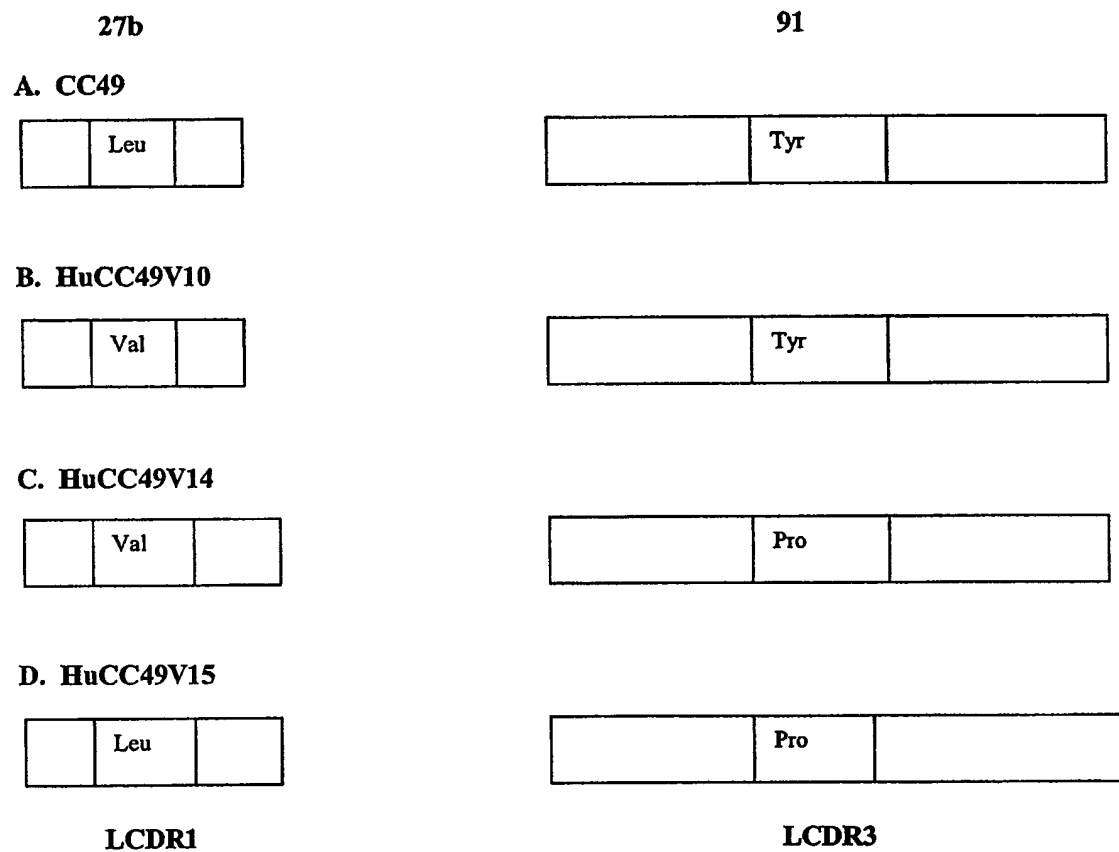
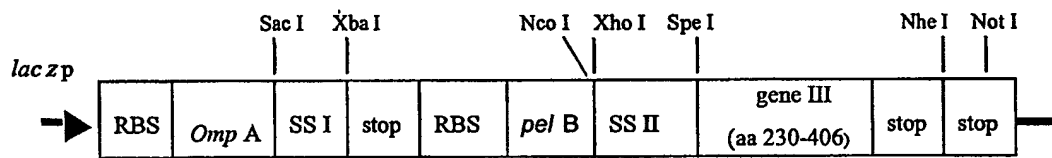


FIG. 2

pComb3H-SS



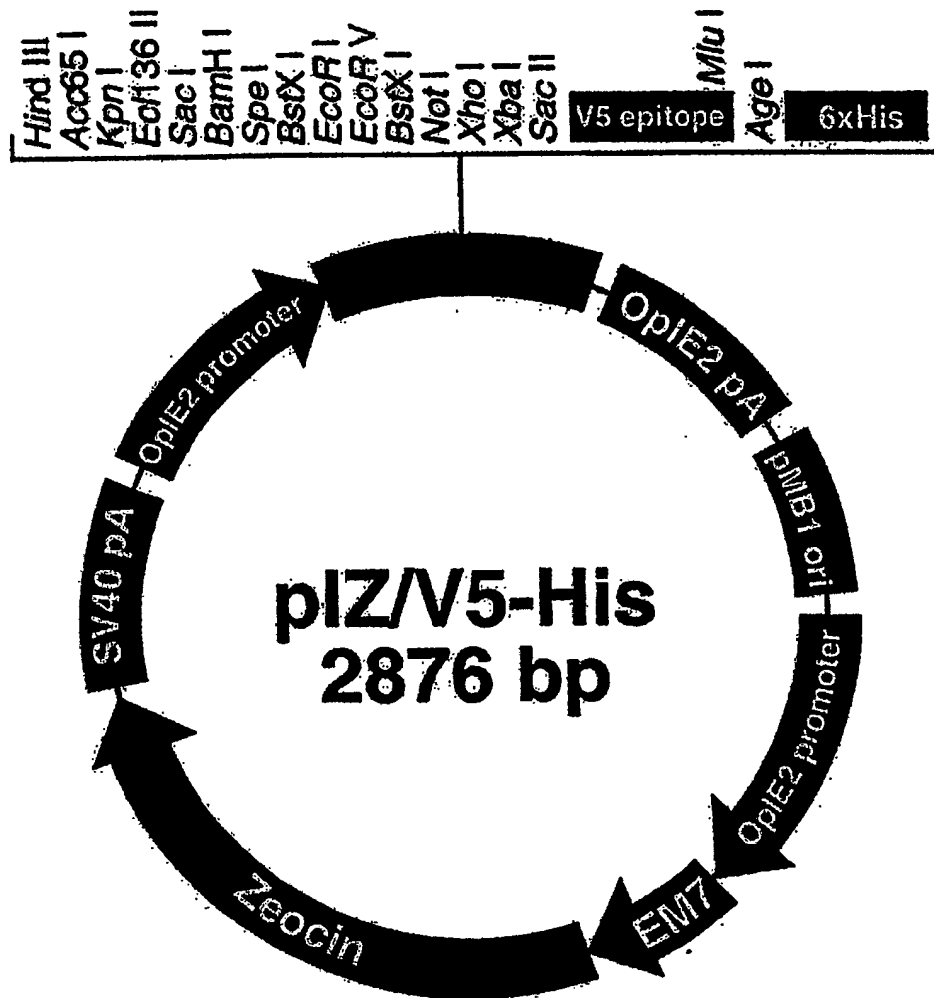


FIG. 3A

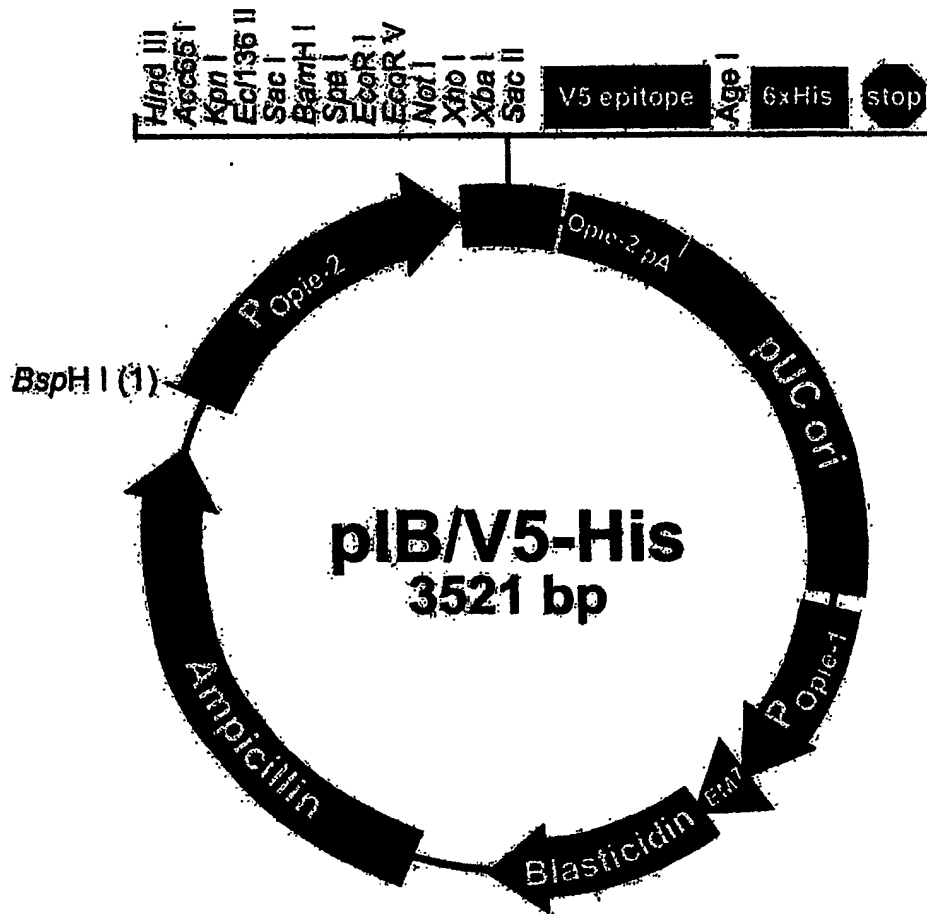


FIG. 3B

Fig. 4A

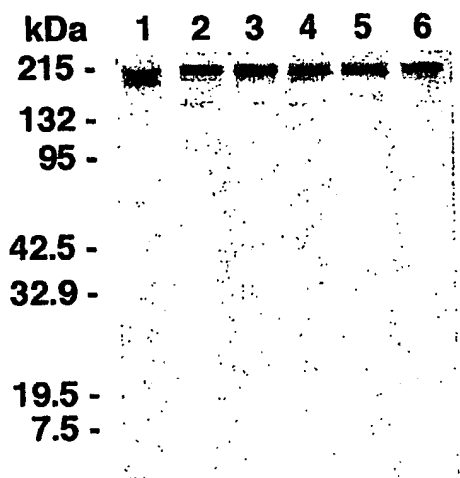


Fig. 4B

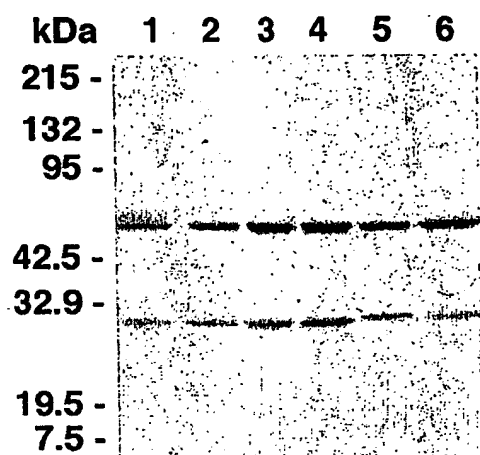
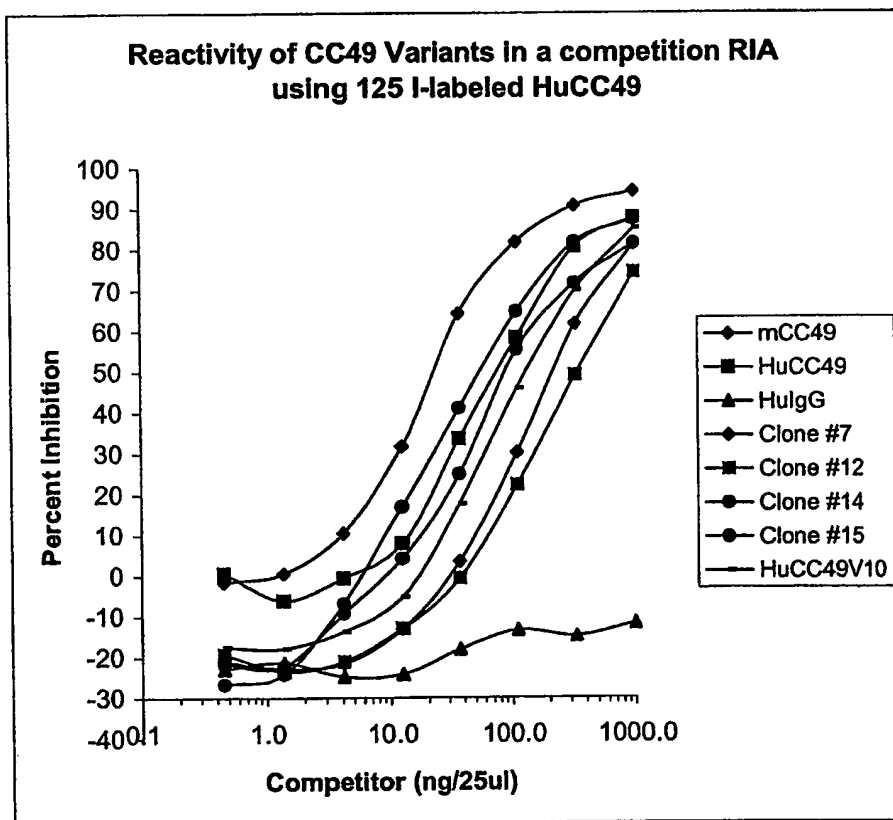


FIG. 5



## FIG. 6

Sample ID: HulG

| Marker | % Gated | % Total | Mean  |
|--------|---------|---------|-------|
| All    | 100.00  | 92.37   | 3.54  |
| M1     | 99.71   | 92.10   | 3.49  |
| M2     | 0.31    | 0.29    | 20.51 |

Sample ID: cCC49 1ug

| Marker | % Gated | % Total | Mean  |
|--------|---------|---------|-------|
| All    | 100.00  | 44.81   | 41.60 |
| M1     | 27.25   | 12.21   | 5.92  |
| M2     | 73.04   | 32.73   | 54.78 |

Sample ID: HuCC49 1ug

| Marker | % Gated | % Total | Mean  |
|--------|---------|---------|-------|
| All    | 100.00  | 85.59   | 18.04 |
| M1     | 70.78   | 60.58   | 4.36  |
| M2     | 29.43   | 25.19   | 50.88 |

Sample ID: HuCC49-V10 1ug

| Marker | % Gated | % Total | Mean  |
|--------|---------|---------|-------|
| All    | 100.00  | 87.85   | 15.56 |
| M1     | 72.35   | 63.56   | 4.46  |
| M2     | 27.81   | 24.43   | 44.41 |

Sample ID: HuCC49-7 1ug

| Marker | % Gated | % Total | Mean  |
|--------|---------|---------|-------|
| All    | 100.00  | 87.77   | 15.79 |
| M1     | 71.22   | 62.51   | 4.35  |
| M2     | 28.87   | 25.34   | 44.00 |

Sample ID: HuCC49-12 1ug

| Marker | % Gated | % Total | Mean  |
|--------|---------|---------|-------|
| All    | 100.00  | 88.55   | 14.46 |
| M1     | 73.53   | 65.11   | 4.31  |
| M2     | 26.62   | 23.57   | 42.47 |

Sample ID: HuCC49-14 1ug

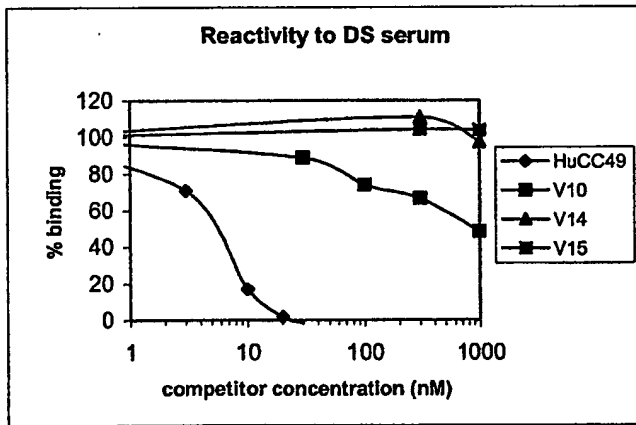
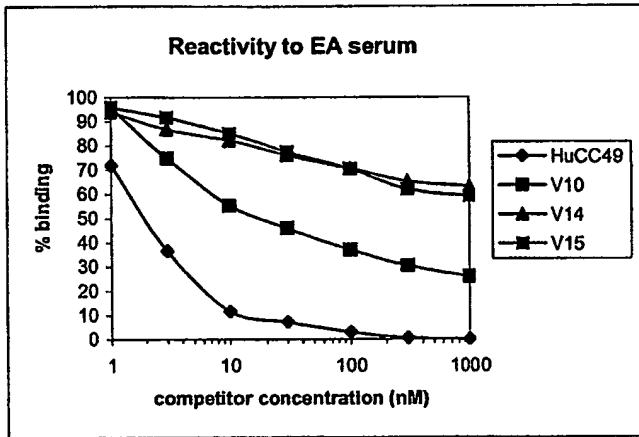
| Marker | % Gated | % Total | Mean  |
|--------|---------|---------|-------|
| All    | 100.00  | 87.02   | 24.54 |
| M1     | 56.44   | 49.11   | 5.40  |
| M2     | 43.76   | 38.08   | 49.17 |

Sample ID: HuCC49-15 1ug

| Marker | % Gated | % Total | Mean  |
|--------|---------|---------|-------|
| All    | 100.00  | 80.62   | 33.47 |
| M1     | 32.20   | 25.96   | 6.29  |
| M2     | 68.07   | 54.88   | 46.23 |



FIG. 7



## SEQUENCE LISTING

<110> The Government of the United States of America, as represented by the  
Secretary of the Department of Health and Human Services

Kashmiri, Syed V.S.  
Schlom, Jeffrey  
Padlan, Eduardo A.

<120> HUMANIZED ANTI-TAG 72 CC49 FOR DIAGNOSIS AND THERAPY OF HUMAN TUMORS

<130> 4239-66176

<150> 60/393,077

<151> 2002-06-28

<160> 16

<170> PatentIn version 3.1

<210> 1

<211> 31

<212> DNA

<213> Artificial sequence

<220>

<223> primer

<400> 1

tgagcggcac agagctcgac atcgtgatga g

31

<210> 2

<211> 26

<212> DNA

<213> Artificial sequence

<220>

<223> primer

<400> 2

agctataata ctgshkacaa taatag

26

<210> 3

<211> 26

<212> DNA

<213> Artificial sequence

<220>

<223> primer

<220>

<221> misc\_feature

<222> (1)..(26)

<223> n i s a , g , c o r t

<400> 3

gggatagct atagbnctgc tgacaa

26

<210> 4  
<211> 26  
<212> DNA  
<213> Artificial sequence

<220>  
<223> primer

<220>  
<221> misc\_feature  
<222> (1)..(26)  
<223> n is a, g, c or t

<400> 4  
tgagggata gctsnntac tgctga

26

<210> 5  
<211> 26  
<212> DNA  
<213> Artificial sequence

<220>  
<223> primer

<220>  
<221> misc\_feature  
<222> (1)..(26)  
<223> n is a, g, c or t

<400> 5  
agctgagggg atasnnataa tactgc

26

<210> 6  
<211> 26  
<212> DNA  
<213> Artificial sequence

<220>  
<223> primer

<220>  
<221> misc\_feature  
<222> (1)..(26)  
<223> n is a, g, c or t

<400> 6  
cgaagctgag gggsnngcta taatac

26

<210> 7  
<211> 26  
<212> DNA  
<213> Artificial sequence

<220>

<223> primer

<220>

<221> misc\_feature

<222> (1)..(26)

<223> n is a, g, c or t

<400> 7

cagcgccgaa gctsnnggga tagcta

26

<210> 8

<211> 58

<212> DNA

<213> Artificial sequence

<220>

<223> primer

<400> 8

gcgccgtcta gaattaacac tctcccctgt tgaagctctt tgtgacgggc gaactcag

58

<210> 9

<211> 32

<212> DNA

<213> Artificial sequence

<220>

<223> primer

<400> 9

gcccgtacca tggcccaggc ccagctggtg ca

32

<210> 10

<211> 25

<212> DNA

<213> Artificial sequence

<220>

<223> primer

<220>

<221> misc\_feature

<222> (1)..(25)

<223> n is a, g, c or t

<400> 10

cggggagaga asntccaat ccaact

25

<210> 11

<211> 24

<212> DNA

<213> Artificial sequence

<220>

<223> primer

<220>  
<221> misc\_feature  
<222> (1)..(24)  
<223> n is a, g, c or t

<400> 11  
cgtttccggg sngaaatat ccaa

24

<210> 12  
<211> 24  
<212> DNA  
<213> Artificial sequence

<220>  
<223> primer

<220>  
<221> misc\_feature  
<222> (1)..(24)  
<223> n is a, g, c or t

<400> 12  
aatcatcgtt snggggagag aaat

24

<210> 13  
<211> 24  
<212> DNA  
<213> Artificial sequence

<220>  
<223> primer

<220>  
<221> misc\_feature  
<222> (1)..(24)  
<223> n is a, g, c or t

<400> 13  
aaaaatcatc gnntccggga gaga

24

<210> 14  
<211> 24  
<212> DNA  
<213> Artificial sequence

<220>  
<223> primer

<220>  
<221> misc\_feature  
<222> (1)..(24)  
<223> n is a, g, c or t

<400> 14  
agtacttaaa snhatcgttt ccgg

24

<210> 15  
<211> 24  
<212> DNA  
<213> Artificial sequence

<220>  
<223> primer

<220>  
<221> misc\_feature  
<222> (1)..(24)  
<223> n is a, g, c or t

<400> 15  
tctgtgagta snnaaatca tcgt

24

<210> 16  
<211> 28  
<212> DNA  
<213> Artificial sequence

<220>  
<223> primer

<400> 16  
gcatgtacta gttttgcaca agatttgg

28

(12) INTERNATIONAL APPLICATION PUBLISHED UNDER THE PATENT COOPERATION TREATY (PCT)

(19) World Intellectual Property  
Organization  
International Bureau



(43) International Publication Date  
8 January 2004 (08.01.2004)

PCT

(10) International Publication Number  
WO 2004/003155 A3

- (51) International Patent Classification<sup>7</sup>: C07H 21/04, C07K 16/00, A61K 39/395, G01N 33/53
- (21) International Application Number: PCT/US2003/020367
- (22) International Filing Date: 26 June 2003 (26.06.2003)
- (25) Filing Language: English
- (26) Publication Language: English
- (30) Priority Data: 60/393,077 28 June 2002 (28.06.2002) US
- (71) Applicant (for all designated States except US): THE GOVERNMENT OF THE UNITED STATES OF AMERICA, as represented by THE SECRETARY OF THE DEPARTMENT OF HEALTH AND HUMAN SERVICES [US/US]; c/o National Institutes of Health, Office of Technology Transfer, Suite 325, 6011 Executive Boulevard, Rockville, MD 20852-3804 (US).
- (72) Inventors; and
- (75) Inventors/Applicants (for US only): KASHMIRI, Syed, V., S. [US/US]; 11541 Brandy Hall Lane, Gaithersburg, MD 20878 (US). SCHLOM, Jeffrey [US/US]; 10301 Sorrel Avenue, Potomac, MD 20854 (US). PADLAN, Eduardo, A. [US/US]; 4006 Simms Drive, Kensington, MD 20895 (US).
- (74) Agent: SIEGEL, Susan, Alpert; Klarquist, Sparkman, LLP, One World Trade Center, Suite 1600, 121 SW Salmon Street, Portland, OR 97204 (US).
- (81) Designated States (national): AE, AG, AL, AM, AT, AU, AZ, BA, BB, BG, BR, BY, BZ, CA, CH, CN, CO, CR, CU, CZ, DE, DK, DM, DZ, EC, EE, ES, FI, GB, GD, GE, GH, GM, HR, HU, ID, IL, IN, IS, JP, KE, KG, KP, KR, KZ, LC, LK, LR, LS, LT, LU, LV, MA, MD, MG, MK, MN, MW, MX, MZ, NI, NO, NZ, OM, PG, PH, PL, PT, RO, RU, SC, SD, SE, SG, SK, SL, SY, TJ, TM, TN, TR, TT, TZ, UA, UG, US, UZ, VC, VN, YU, ZA, ZM, ZW.
- (84) Designated States (regional): ARIPO patent (GH, GM, KE, LS, MW, MZ, SD, SL, SZ, TZ, UG, ZM, ZW), Eurasian patent (AM, AZ, BY, KG, KZ, MD, RU, TJ, TM), European patent (AT, BE, BG, CH, CY, CZ, DE, DK, EE, ES, FI, FR, GB, GR, HU, IE, IT, LU, MC, NL, PT, RO, SE, SI, SK, TR), OAPI patent (BF, BJ, CF, CG, CI, CM, GA, GN, GQ, GW, ML, MR, NE, SN, TD, TG).
- Declaration under Rule 4.17:  
— of inventorship (Rule 4.17(iv)) for US only
- Published:  
— with international search report  
— before the expiration of the time limit for amending the claims and to be republished in the event of receipt of amendments
- (88) Date of publication of the international search report: 17 June 2004
- For two-letter codes and other abbreviations, refer to the "Guidance Notes on Codes and Abbreviations" appearing at the beginning of each regular issue of the PCT Gazette.

(54) Title: HUMANIZED ANTI-TAG-72 CC49 FOR DIAGNOSIS AND THERAPY OF HUMAN TUMORS

(57) Abstract: The present disclosure provides humanized CC49 monoclonal antibodies that bind TAG-72 with high binding affinity and that are minimally immunogenic. In one embodiment, a humanized CC49 antibody includes a non-conservative amino acid substitution in a light chain complementarity determining region 3 of the CC49 antibody. In a further embodiment, the humanized CC49 antibody includes a non-conservative substitution of a first residue in a light chain complementarity determining region 3 and a substitution of a second residue in a complementarity determining region of the humanized CC49 antibody. In several of the embodiments, methods are disclosed for the use of a humanized CC49 antibody in the detection or treatment of a tumor in a subject. Also disclosed is a kit including the humanized CC49 antibody described herein.



WO 2004/003155 A3

**INTERNATIONAL SEARCH REPORT**

International application No.

PCT/US03/20367

**A. CLASSIFICATION OF SUBJECT MATTER**

IPC(7) : C07H 21/04; C07K 16/00; A61K 39/395; G01N 33/53  
 US CL : 536/23.53; 435/320.1, 7.1; 530/387.1, 388.85, 391.1; 424/133.1, 156.1, 181.1

According to International Patent Classification (IPC) or to both national classification and IPC

**B. FIELDS SEARCHED**

Minimum documentation searched (classification system followed by classification symbols)  
 U.S. : 536/23.53; 435/320.1, 7.1; 530/387.1, 388.85, 391.1; 424/133.1, 156.1, 181.1

Documentation searched other than minimum documentation to the extent that such documents are included in the fields searched

Electronic data base consulted during the international search (name of data base and, where practicable, search terms used)  
 Please See Continuation Sheet

**C. DOCUMENTS CONSIDERED TO BE RELEVANT**

| Category * | Citation of document, with indication, where appropriate, of the relevant passages  | Relevant to claim No.  |
|------------|---|------------------------|
| X          | WO 00/26394 (THE GOVERNMENT OF THE UNITED STATES OF AMERICA AS REPRESENTED BY THE SECRETARY, DEPARTMENT OF HEALTH AND HUMAN SERVICES) 11 May 2000 (11/05/00), see entire document, especially Figure 2, page 25, lines 1-11, page 14, line 15-22, page 14-19. | 1, 4-19, 21-22, 32-50, |
| --         |   | 52                     |
| Y          |   | 51, 53-54              |

Further documents are listed in the continuation of Box C.

See patent family annex.

\* Special categories of cited documents:

- "A" document defining the general state of the art which is not considered to be of particular relevance
- "E" earlier application or patent published on or after the international filing date
- "L" document which may throw doubts on priority claim(s) or which is cited to establish the publication date of another citation or other special reason (as specified)
- "O" document referring to an oral disclosure, use, exhibition or other means
- "P" document published prior to the international filing date but later than the priority date claimed

- "T" later document published after the international filing date or priority date and not in conflict with the application but cited to understand the principle or theory underlying the invention
- "X" document of particular relevance; the claimed invention cannot be considered novel or cannot be considered to involve an inventive step when the document is taken alone
- "Y" document of particular relevance; the claimed invention cannot be considered to involve an inventive step when the document is combined with one or more other such documents, such combination being obvious to a person skilled in the art
- "&" document member of the same patent family

Date of the actual completion of the international search  
 26 November 2003 (26.11.2003)

Date of mailing of the international search report  
 04 MAY 2004

Name and mailing address of the ISA/US  
 Mail Stop PCT, Attn: ISA/US  
 Commissioner for Patents  
 P.O. Box 1450  
 Alexandria, Virginia 22313-1450  
 Facsimile No. (703)305-3230

Authorized officer  
*Galene Bell-Harris*  
 Larry R. Helms  
 Telephone No. 571/272 -1600



**INTERNATIONAL SEARCH REPORT**

PCT/US03/20367

**Continuation of B. FIELDS SEARCHED Item 3:**

CAPLUS MEDLINE BIOSIS WEST

Search terms: CC49, antibody, CDR grafted, humanized, human, LEN, TAG-72, inventor name

**This Page is Inserted by IFW Indexing and Scanning  
Operations and is not part of the Official Record**

**BEST AVAILABLE IMAGES**

Defective images within this document are accurate representations of the original documents submitted by the applicant.

Defects in the images include but are not limited to the items checked:

- BLACK BORDERS
- IMAGE CUT OFF AT TOP, BOTTOM OR SIDES
- FADED TEXT OR DRAWING
- BLURRED OR ILLEGIBLE TEXT OR DRAWING
- SKEWED/SLANTED IMAGES
- COLOR OR BLACK AND WHITE PHOTOGRAPHS
- GRAY SCALE DOCUMENTS
- LINES OR MARKS ON ORIGINAL DOCUMENT
- REFERENCE(S) OR EXHIBIT(S) SUBMITTED ARE POOR QUALITY
- OTHER: \_\_\_\_\_

**IMAGES ARE BEST AVAILABLE COPY.**

**As rescanning these documents will not correct the image problems checked, please do not report these problems to the IFW Image Problem Mailbox.**